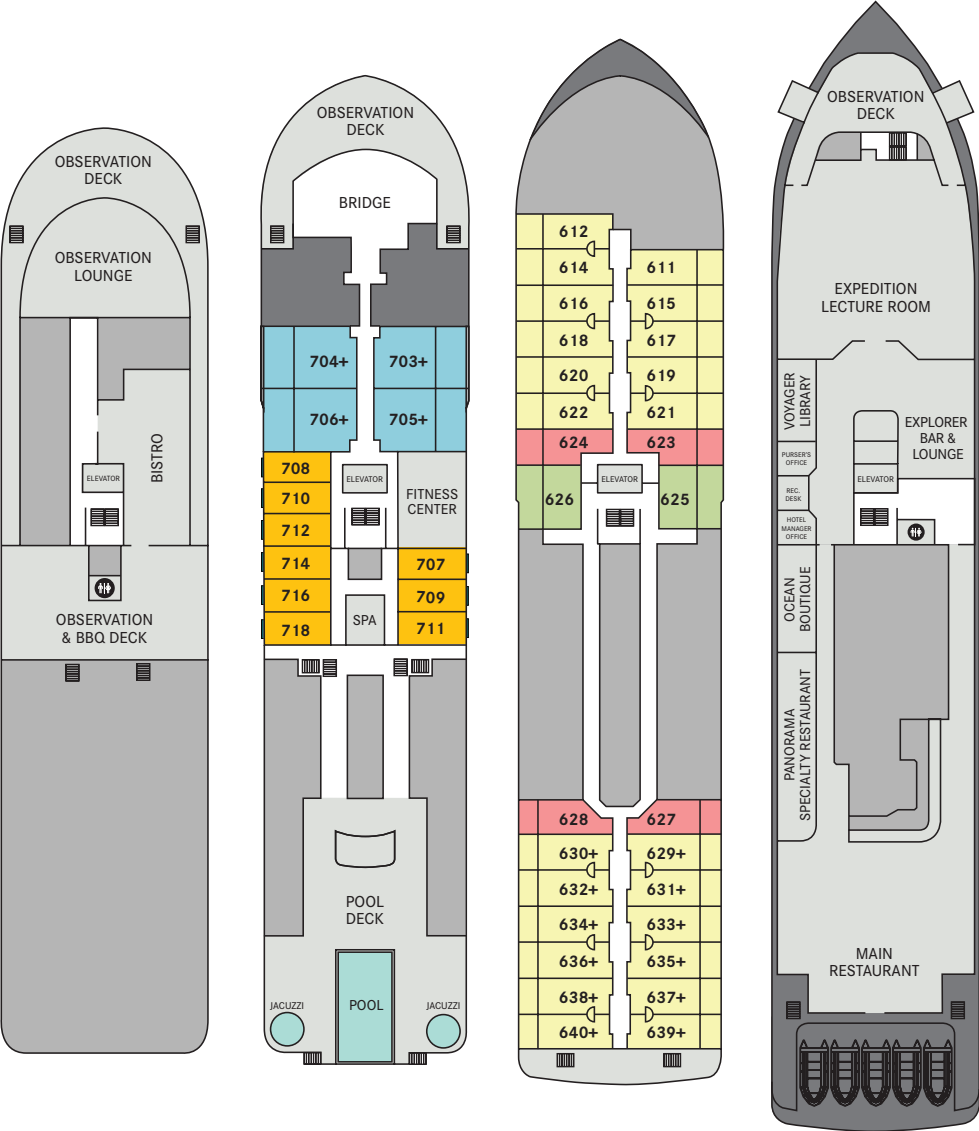


OCEAN VICTORY



DECK 8

Observation Deck
Observation Lounge
Bistro
Observation &
BBQ Deck

DECK 7

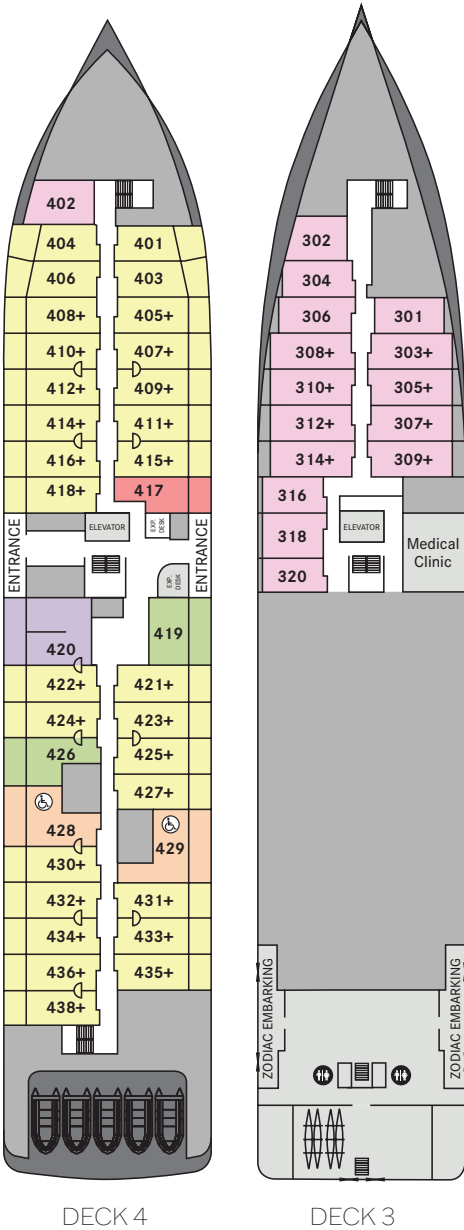
Observation Deck
Fitness Center
Pool Deck

DECK 6

DECK 5

Observation Deck
Expedition Lecture
Room
Explorer Bar & Lounge
Voyager Library
Ocean Boutique
Panorama Specialty
Restaurant
Main Restaurant

Deck 8
Deck 7
Deck 6
Deck 5
Deck 4
Deck 3



SUITES AND STATEROOMS CATEGORIES

PS	Premium Suite with Private Balcony	DECK 4
A	Deluxe Suite with Private Balcony	DECK 7
B	Private Balcony Suite	DECK 4
BB	Private Balcony Suite	DECK 6
C	Deluxe Stateroom with Private Balcony	DECK 4 DECK 6
D	View Stateroom	DECK 3
E	Stateroom with Private Balcony	DECK 4 DECK 6
F	Stateroom with French Balcony	DECK 7

D Connecting Rooms + Triple Accommodation

Triple Occupancy: Cabins 303, 305, 307, 308, 309, 310, 312 and 314 have day beds instead of sofas. Day beds are made as such during the day, and turned into actual sleeping arrangements at turn down if needed.

SPECIFICATIONS

Year built/Refurbished	2021
Length	342 Ft.
Guest Decks	6
Suites and Staterooms	93
Guests	186
Crew	100
Registry	Nassau, Bahamas

SAFECRUISE™

Victory Cruise Lines has introduced SafeCruise, our enhanced set of health and safety protocols. SafeCruise is our commitment to our guests', crew and the communities we visit and features a vaccination requirement and onboard processes to enhance health and safety. Visit www.VictoryCruiseLines.com for information.

Your Private RETREAT

Outfitted in luxurious contemporary style, your suite or stateroom offers up to 465 square feet of private space, including your own private balcony in most categories.

YOUR STATEROOM INCLUDES:

- Private bath with spacious shower and beautiful finishes
- Complimentary designer amenities
- Large storage spaces for luggage, clothing, and personal items
- Hair dryer
- Mini refrigerator
- Bathrobes and slippers
- Safe
- Onboard laundry service
- Your personal water bottle for use at refillable stations throughout the ship
- Panoramic view



PREMIUM SUITE WITH PRIVATE BALCONY

465 SQ. FT.

- Queen bed or two single beds
- Living room with twin sofa-bed
- Table and chair
- Private balcony
- Located on Deck 4

PS

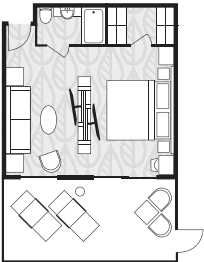


DELUXE SUITE WITH PRIVATE BALCONY

445 SQ. FT.

- Queen bed or two single beds
- Seating area with twin sofa-bed
- Private balcony
- Located on Deck 7

A

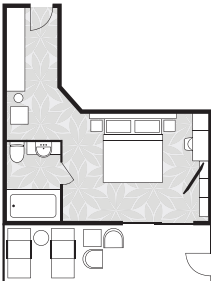


PRIVATE BALCONY SUITE

355-372 SQ. FT.

- Queen bed or two single beds
- Seating area
- Private balcony
- Wheelchair-accessible
- Located on Deck 4

B



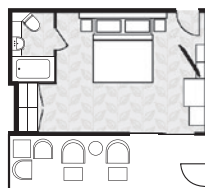


PRIVATE BALCONY SUITE

297-325 SQ. FT.

BB

- Queen bed or two single beds
- Seating area
- Private balcony
- Located on Decks 4 and 6



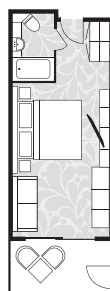
DELUXE STATEROOM WITH PRIVATE BALCONY

213-264 SQ. FT.

C

- Queen bed or two single beds
- Sofa
- Private balcony
- Located on Decks 4 and 6

If guests wish to book two staterooms with connecting doors, this is a possibility with this cabin category.



VIEW STATEROOM

165-225 SQ. FT.

D

- Queen bed or two single beds
- Located on Decks 3 and 4

This cabin category is close to the Mudroom, and has quick access to the Zodiac platforms for disembarkation during landings.



STATEROOM WITH PRIVATE BALCONY

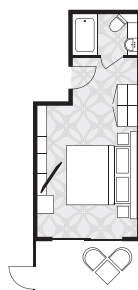
221-260 SQ. FT.

E

- Queen bed or two single beds
- Sofa
- Private balcony

Located on Decks 4 and 6

If guests wish to book two staterooms with connecting doors, this is a possibility with this cabin category.



STATEROOM WITH FRENCH BALCONY

157-170 SQ. FT.

F

- Queen bed or two single beds
- French balcony
- Located on Deck 7

