

Southwest **NATIONAL PARKS**





For details or to reserve:

ncsu.orbridge.com

(919) 515-0508

MAY 04, 2022 – MAY 12, 2022

PRE-TOUR: APRIL 30, 2022 — MAY 04, 2022

SOUTHWEST NATIONAL PARKS

Immerse yourself in the majestic beauty of the American Southwest, discovering the geological wonders of our national parks, including visits to Grand Canyon, Zion, and Bryce Canyon. Millions of years of uplift and erosion have left a spectacular, monumental imprint across America's Southwest plateau.

Go where hoodoos, slot canyons, arches, buttes, and mesas fill vast horizons with impossible beauty; and learn about the Americans of "Red Rock Country" who shaped our nation's history.



Dear Friends,

We are pleased to invite you to join fellow alumni and friends on a journey to the exceptional national parks and monuments of the Southwest. Travel to Grand Canyon National Park for awe-inspiring views from the park's rim. Admire the beauty of light striking Antelope Canyon's narrow sandstone walls. Share a peaceful evening with Navajo storytellers, and ponder cultures past and present at a petroglyph site during a river raft ride down Glen Canyon.

Continue to Utah where you'll spend enjoyable time at Bryce Canyon and Zion National Parks—viewing rock formations and otherworldly landscapes that must be seen to be believed.

With the guidance of an expert Orbridge Expedition Leader and the comforts of a private motor coach, there is no better way to visit our national parks.

PLUS: Kick off your adventure in the Southwest by joining the optional pre-tour, Denver to Moab Aboard the *Rocky Mountaineer*. Enjoy nature's wondrous scenery in comfort and style during two days of rail travel in premium SilverLeaf class. After arriving in Moab, delight in guided touring at Arches National Park and Canyonlands National Park for two additional areas to explore.

This is a peak-season opportunity for university and college alumni association travelers. With significant savings of more than \$800 per couple, we anticipate this program will fill quickly. Be certain to reserve your spot today.

Please reserve online at ncsu.orbridge.com, by calling (800) 627-2586 or (919) 515-0508, or by emailing hart@ncsu.edu.

Sincerely,

A handwritten signature in black ink that reads "Kathy Hart". The signature is fluid and cursive, with a long, sweeping underline that extends to the left.

Kathy Hart
WolfTrek Travel Director
NC State Alumni Association

PS: Orbridge and NC State take your health and wellness seriously. Visit orbridge.com/wellness to learn about our enhanced COVID-19 protocols.

Please note: The information contained in this document is current as of 7/2/2021

Program Highlights:

- Explore the Southwest's natural wonders with a knowledgeable Orbridge Expedition Leader.
 - Stay at lodges inside Grand Canyon National Park and other properties carefully selected for their rich histories, beautiful locations, and superb service and accommodations.
 - Spend additional time in Grand Canyon National Park or choose to join an optional helicopter flightseeing excursion over the Grand Canyon (additional fee).
 - Discover the sunbaked natural structures and sacred lands of Monument Valley.
 - Witness the towering red rock cliffs lining the Colorado River during a rafting excursion in Glen Canyon.
 - Behold the radiant colors and fluid-like patterns inside the walls of Antelope Canyon.
 - Visit a traditional Navajo hogan, and set out on a 4-wheel drive tour through Monument Valley.
 - Observe the monolithic hoodoos in Bryce Canyon National Park.
 - Follow the paths of Ancestral Puebloans and pioneers at Zion National Park.
 - **What's included:** 8 nights accommodations; a welcome and farewell reception, 8 breakfasts, 1 lunch, and 4 dinners; full guiding services of an Orbridge Expedition Leader as well as expert local guides; admission and park fees throughout; all activities as described in the 9-day itinerary, unless noted otherwise; private deluxe motor coach with air conditioning and comfortable seating; luggage portage; gratuities to Orbridge Expedition Leader, local guides, drivers, and porters; and airport transfers for guests arriving and departing during the suggested times.
-



Itinerary:

Day 1: Arrive in Phoenix, AZ / Scottsdale

Wednesday, May 4, 2022

Settle in at the hotel before meeting fellow travel companions and your Orbridge Expedition Leader for a welcome reception.

Overnight: Scottsdale Marriott at McDowell Mountains (R)

Day 2: Scottsdale / Sedona / Grand Canyon National Park

Thursday, May 5, 2022

After breakfast, travel north through the cactus-studded Sonoran Desert, arriving in captivating Sedona for a brief stop. This breathtakingly picturesque town is a haven for artists and photographers who are dazzled by the landscape filled with remarkable red sandstone cliffs.

Continue on to Grand Canyon National Park—a UNESCO World Heritage Site—to marvel at the impressive views that make the park one of the Seven Natural Wonders of the World. Wander along the canyon rim and admire the West's famous Colorado River below.

This afternoon, join a ranger-led program or relax and bask in the park's offerings at leisure.

Overnight: Maswik Lodge (B,D)

Day 3: Grand Canyon National Park

Friday, May 6, 2022

Following breakfast, spend free time exploring the park or take a once-in-a-lifetime opportunity to fly over the heart of the Grand Canyon during an optional helicopter flightseeing excursion. (You may purchase this optional excursion in advance from our Guest Services team. Reserve early for best availability as space is limited.)

Grand Canyon National Park is enormous, with thousands of acres of land appealing to travelers' different interests. Walking/hiking and taking photographs are popular activities, and a great way to keep memories of the adventure vibrant.

Visit well-known viewpoints such as Mather Point and Desert View, have guided programming surrounding the geologic and human history of the canyon, and walk the rim during sunset. Other potential options for enjoying the park include strolling the trail of time, learning about the history and formation of the Grand Canyon at the Yavapai Museum of

Geology, and/or visiting the historic Kolb studio to learn about the art of the Grand Canyon.

Overnight: Maswik Lodge (B)

Day 4: Grand Canyon National Park / Monument Valley, UT

Saturday, May 7, 2022

After breakfast, delight in a coach ride through the Navajo Nation in northern Arizona, stopping at Navajo National Monument for the opportunity to take a short hike to an overlook to view Ancient Puebloan ruins. Continue to accommodations of a lodge that's famous for its role in dozens of Old West movies, trade, and Navajo territory culture. Settle in and explore the collection of movie memorabilia and Native American artifacts in the Goulding's Museum and Trading Post.

Tonight, retreat to an authentic Navajo cookout and storytelling presentation focused on Navajo legend, songs, and history.

Overnight: Goulding's Lodge (B,D)

Day 5: Monument Valley / Lake Powell, AZ

Sunday, May 8, 2022

After breakfast, board a 4x4 open-air vehicle to explore the magnificent Monument Valley alongside a Navajo guide, viewing and listening to stories about the unique sandstone formations.

Savor lunch at Goulding's Lodge before setting out for Lake Powell and a guided tour of spectacular Antelope Canyon. Have a camera ready to capture the otherworldly passageways of red-orange rock, created by water erosion, which appear to be "flowing" and reflect light in the most stunning ways.

Next head to Lake Powell Resort for dinner. The evening is at leisure to relax and relish the property's amenities.

Overnight: Lake Powell Resort (B,L,D)

Day 6: Lake Powell / Bryce Canyon National Park, UT

Monday, May 9, 2022

Today's adventures include a raft trip down the Colorado River through nearby Glen Canyon. As you gaze at the 700- to 1,400-foot red rock cliffs overhead, watch for the California Condor. Stop to view 6,000-year-old petroglyphs, believed to have been carved by Ancestral Puebloans.

Later, view the slow erosion of ages in Bryce Canyon National Park. Resembling castle towers and cathedral spires, the unique hoodoos rock formations are unforgettable. Watch the natural amphitheaters and canyons glow while wandering the rim.

Overnight: The Lodge at Bryce Canyon (B)

Day 7: Bryce Canyon National Park / Zion National Park

Tuesday, May 10, 2022

Today start the day with more touring of Bryce Canyon before heading to Zion National Park for a riverside walk.

Overnight: Zion Park Lodge (B,D)

Day 8: Zion National Park / Las Vegas, NV

Wednesday, May 11, 2022

Hike to the Emerald Pools at Zion and spend the morning. Take a ranger-led program, or listen to one of many ranger talks at the Zion Human History Museum. Lunch is on your own before departing for Las Vegas and the farewell reception.

Overnight: The Westin Las Vegas Hotel & Spa (B,R)

Day 9: Depart Las Vegas

Thursday, May 12, 2022

After breakfast, guests departing during the suggested times take a complimentary transfer to McCarran International Airport for flights home. (B)

B = Breakfast, L = Lunch , D = Dinner, R = Reception

(Itinerary subject to change.)

Activity Level:

Moderate

The majority of the program's activities will take place outdoors, and a fair amount of walking on varying terrain is to be expected. Many of the parks have dirt trails—but they are usually fairly smooth for walking—and some do have paved pathways and boardwalks.

It is our expectation that guests on this program are able to walk up and down a flight of stairs, and get in and out of a motor coach without assistance. If you are able to walk

a mile at a moderate pace, you will be able to enjoy all of the excursions. Also keep in mind that you will experience varying altitudes, rising up to 8,000 feet, to which you may not be accustomed. Guests should also have the ability to embark and disembark a scenic raft, have proper fit into a life jacket, and be able to remain seated and balanced in the craft.

What's Included:

- 8 nights accommodations
 - A welcome and farewell reception, 8 breakfasts, 1 lunch, and 4 dinners
 - Full guiding services of an Orbridge Expedition Leader as well as expert local guides
 - Admission and park fees throughout
 - All activities as described in the 9-day itinerary, unless noted otherwise
 - Private deluxe motor coach with air conditioning and comfortable seating
 - Luggage portage
 - Gratuities to Orbridge Expedition Leader, local guides, drivers, and porters
 - Airport transfers for guests arriving and departing during the suggested times
-

Optional Excursion(s):



Grand Canyon Helicopter Excursion

\$329 per person

Set out on a helicopter tour of the North, South and East rim including a flight over the confluence of the little Colorado River. Fly deeper into the canyon viewing immense buttes, majestic temples, and spectacular side canyons. This incredible sightseeing opportunity has minimal impact on the nature of this remarkable destination.

Aboard the helicopter, witness amazing landmarks while remaining conscious of the fragility of the environment. Discover awe-inspiring views of the Grand Canyon's eastern gorge aboard a first rate, environmentally-friendly EC130 aircraft complete with forward-facing stadium seating and a nearly 180-degree view. Enjoy unobstructed aerial sights of the colossal walls of the Grand Canyon, the rugged forests of the North Rim, and Dragon Corridor.

These are some of the widest and deepest regions of the Grand Canyon and offer guests the most comprehensive views and experiences only available from the air.

Helicopter Features:

- Fenestron tail rotor system and the latest in quiet aircraft technology, aiming to achieve a peaceful environment

- Bose noise-canceling headphones provide guests with choreographed music and tour narrations
- 23% larger cabins with wrap-around glass create 180 degrees of beautiful, unobstructed views
- Forward-facing, raised platform, incredibly comfortable, theater-style seating
- Air conditioned and temperature controlled for comfort

Normal Orbridge cancellation policies apply where optional excursions are non-refundable within 90 days of departure. Not all excursions listed may be available. Availability is subject to sufficient participation and weather conditions. You may purchase this optional excursion in advance from our Guest Services team. We recommend reserving early for best availability as space is limited. For flight excursions, weight and minimum age requirements apply, and individual dressed weight and birth date must be provided at time of booking.

Your Guide(s):

Orbridge Expedition Leader



On this program, you will have the benefit of an expert Expedition Leader with extensive local knowledge and experience as a cultural, historic, and naturalist interpreter. With their contribution of exceptional know-how and enthusiasm adding depth to your experience, enjoy the cultures and locations you explore with added confidence, understanding, and appreciation.

Program Accommodations:

Scottsdale Marriott at McDowell Mountains

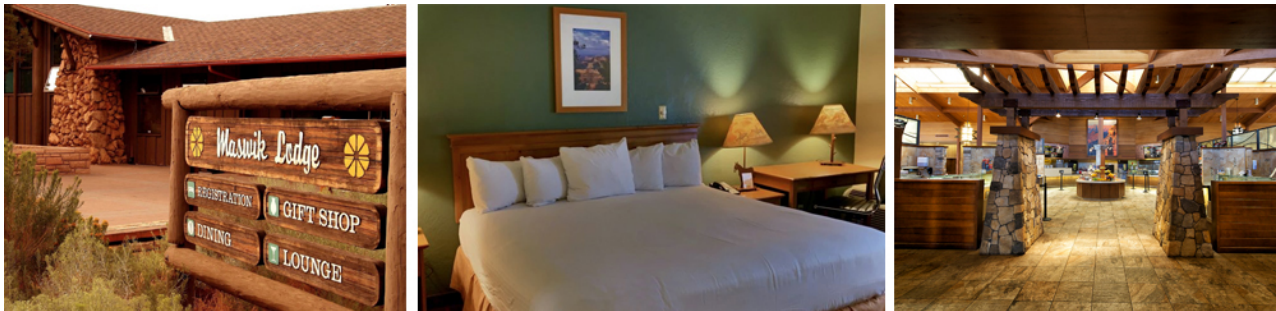


May 4

Delight in the well-appointed comforts of this modern hotel, featuring breathtaking mountain views. Cool off in the outdoor pool, take advantage of the fitness center, or relax outside on the picturesque patio.

Room Amenities: Individual climate control, sofa, writing desk, flat-screen cable/satellite TV, Wi-Fi (additional fee), phone, clock, coffee and tea maker, minibar, mini-fridge, robes, iron and ironing board, and marble bathroom with sundries and hair dryer.

Maswik Lodge



May 5 - May 6

Nestled within the ponderosa pine forest, Maswik Lodge is a short quarter-mile walk to the canyon's edge. Enjoy contemporary rooms and access to the main lodge.

Room Amenities: Individual climate control, TV, phone, mini-fridge, coffee maker, safe, and en suite bathroom with sundries and hair dryer.

Goulding's Lodge



May 7

Relax and savor the spectacular views of Monument Valley at Goulding's Lodge, a popular locale for Old West movies. Be sure to check out Goulding's Trading Post Museum, showcasing artifacts, artwork, and film memorabilia. Note: The lodge does not have an elevator.

Room Amenities: Individual climate control, satellite TV with DVD player, complimentary Wi-Fi (in most areas), mini-fridge, coffee maker, and en suite bathroom with sundries and hair dryer.

Lake Powell Resort

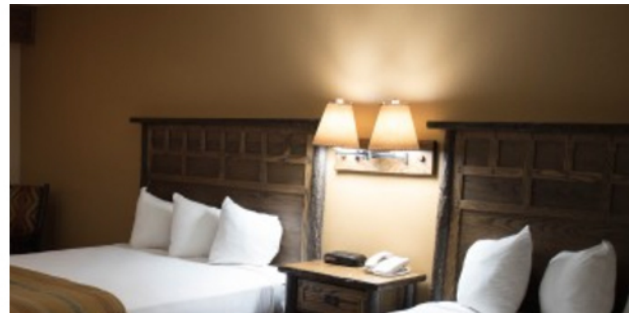


May 8

Located in Page, Arizona, the Lake Powell Resort offers comfortable lodging and first-rate dining. The property's lake view rooms with Native American flair are an ideal retreat after a day full of adventurous fun. Sit back and take in views of Wahweap Bay, Lone Rock, Castle Rock, and breathtaking sunsets. Complimentary Wi-Fi access is available in the lobby or lounge.

Room Amenities: Individual climate control, cable TV, phone, mini-fridge, coffee and tea maker, and en suite bathroom with sundries and hair dryer.

The Lodge at Bryce Canyon



May 9

Situated just steps away from the rim of Bryce Canyon National Park, this property's recently remodeled rooms provide contemporary comforts in combination with an authentic western park experience. Wi-Fi is complimentary in the main lodge.

Room Amenities: Individual climate control, semi-private porch or balcony, phone, clock radio, microwave, mini-fridge, coffee maker, and en suite bathroom with sundries and hair dryer. (Guest rooms do not include a TV.)

Zion Park Lodge

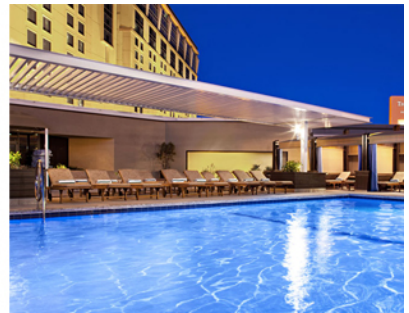


May 10

The only in-park lodging at Zion National Park, the Zion Park Lodge is serenely nestled among towering red rock cliffs. Each guest room provides a warm, comfortable atmosphere, ensuring a memorable stay.

Room Amenities: Individual climate control, complimentary Wi-Fi, phone, radio/MP3 compatible alarm clock, coffee maker, iron and ironing board, and en suite bathroom with shower gel, shampoo, conditioner and hair dryer. (Guest rooms do not include a TV.)

The Westin Las Vegas Hotel & Spa



May 11

Welcome to the City of Lights! This stylish hotel —just off the Las Vegas Strip—features a non-smoking environment, modern guest rooms, outdoor heated pool, fitness studio, lobby lounge, and 24-hour bistro.

Room Amenities: Individual climate control, Heavenly® Bed, 42" flat-screen LCD cable TV, complimentary Wi-Fi, phone, coffee maker, safe, and en suite bathroom with deluxe Heavenly® Bath sundries and hair dryer.

(Accommodations subject to change.)

What Guests Are Saying:

"This tour was a nice mix of picture opportunities, organized hikes, and personal exploration time. We covered a lot of territory but never really felt rushed. Because we were in such a small group, there was a lot of personalized attention which definitely made the difference. We were definitely glad that we did the trip.

This was a very well organized program. Our Expedition Leader was definitely the key to our trip. He was knowledgeable, personable, and engaging. He was willing to accommodate us every step of the way. He engaged each person and made everyone feel like they were important. Every hike that he led or participated in was worthwhile. We could not imagine a better person to lead our tour."

—Bob & Rhea C., Blackwood, NJ

"Our Expedition Leader's knowledge and dedication to detail enhanced the experience. His wisdom and knowledge of geography, flora, fauna, and locations made this trip nearly ideal. Equally impressive were the dealings with Orbridge throughout the build-up to the trip and the excellent material provided to assist with our own personal planning and enjoyment.

The highlights were the hoodoos at Bryce Canyon, the vast beauty and serenity of Monument Valley, and the extraordinary grandeur of the bridges at the National Bridges National Monument."

—Ben F., Ashburn, VA

"This trip was outstanding in all ways. The scenery was amazing, food was really good, driver and guides were personable, enthusiastic and very knowledgeable. They worked hard to make sure we were well taken care of.

This is our second Orbridge trip. Both were educational, well organized and a good luxury value. We will definitely return and recommend."

—Georgia & Tom W., Alexander City, AL

"This trip seemed like a gift to us at our ages — we had not visited many of these wonderful parks and would not likely drive to all of them on our own. Very well

organized! Excellent guides! Great management!"

–Patty & Tom P., La Jolla, CA

"We really enjoyed ourselves. It exceeded our expectations. We didn't have to worry about anything besides having a good time."

–Susan K., Lakeland, MI

"Fabulous destinations and sights. Tour elements came together seamlessly. Our Expedition Leader was outstanding— a wealth of knowledge about the geography, geology, and history of the area. Small group enhanced the personal experience."

–Doug B., San Francisco, CA

"This was an excellent trip. We had lots of fun and made some great memories as well as met some wonderful people.

This is a great program that can encompass a wide range of personal interests (the sights, the local culture, the history, and lots of geological & biological information). Excellent tour guides, driver, and organization. Everything flowed seamlessly and was well-prepared."

–Faith P., Lottie, LA

"I am so sad this trip is over—there are so many entries on my bucket list that I can now check off. Absolutely everything was wonderful. Probably the best trip I've ever taken—everything was just perfect. The Expedition Leader was so knowledgeable."

–Marilyn H., San Antonio, TX

"It was a great trip. The National Parks in the Southwest are spectacular. The scenery is indescribable. So glad that we were able to join the group. I would recommend this trip to anyone wanting to get a taste of the Southwest and the beautiful National Parks."

–Kathy D., Cincinnati, OH

"It was really a trip of a lifetime. Accommodations were outstanding. Extremely well planned and executed."

–Marilyn M., Delaware, OH

"It was a great trip. It was well thought out. Our Expedition Leader brought a lot of color, information and humor to the trip. The overall beauty of the sites we saw were incredible."

–Pat & Sondra M., Ellicott City, MD

"Best trip ever. Every new site was a highlight. Nothing but amazing from one day to the next. Great accommodations, food, information and fun!"

–Marguerite N., Milford, NJ

"We wanted to see this part of the country but we didn't want to drive and plan it, but this tour provided so much more. We really felt like we experienced the Southwest Parks and learned so much about the Navajo culture and the geology and natural beauty—and why it is the way it is. It was fun and highly educational/interesting."

–Ken & Nancy C., Marshall, IL

"We've been on lots of tours and never had such competent, genuine and fun guides. Very impressed with the itinerary and educational emphasis. Will definitely watch for more programs from Orbridge."

–Gary & Ginny H., Cherry Valley, IL

"This was the best bus tour we have yet been on! Very pleased with the overall experience."

–Sandra H., Fairport, NY

Optional Pre-Tour:

DENVER TO MOAB ABOARD ROCKY MOUNTAINEER



All aboard! Travel by rail between the mile-high city of Denver to the red rock formations of Moab by joining a luxury train journey to America's Southwest—a region steeped in history and full of opportunities to explore. Oversized windows and glass-domed coaches allow you to relax and soak in the magnificent scenery that includes colorful deserts, bewitching hoodoos, and natural archways. As the train winds alongside rivers, through mountain ranges, and past ancient rock canyons, watch for wildlife such as bighorn sheep, bears, mountain lions, deer, and marmots. Entertaining stories from onboard hosts and touches that define comfort combine with locally inspired cuisine to make this an unforgettable adventure. Off the train, enjoy nature with guided tours of Arches National Park and Canyonlands National Park.

Itinerary:

Day +1: Arrive in Denver, CO

Saturday, April 30, 2022

After arriving, settle in and relax for the exciting journey to come.

Overnight: The Oxford Hotel

Day +2: Denver / Rocky Mountaineer / Glenwood Springs

Sunday, May 1, 2022

Embark upon the *Rocky Mountaineer* for two days of extraordinary landscapes between Denver and Moab. This rail route is filled with highlights best seen by train, including Ruby Canyon and Mount Logan.

Set out past the towering Rockies on the way to Glenwood Springs, and then celebrate crossing the Continental Divide with a sparkling wine toast. Later, get excited for lore, lunch, and landscapes! Hear engaging stories of the region from onboard hosts and delight in dining on a three-course lunch. Tour along the Colorado River through picturesque Byers Canyon and Gore Canyon.

If desired, sip a signature cocktail upon approach of overnight destination Glenwood Springs. Disembark and reminisce about the day in comfortable accommodations.

Overnight: Glenwood Springs Lodging (B,L)

Day +3: Glenwood Springs / Rocky Mountaineer / Moab, UT

Monday, May 2, 2022

Rested and relaxed, depart Glenwood Springs aboard the *Rocky Mountaineer*, heading southwest for another day of awe-inspiring views of colorful archways and astounding rock formations.

Savor a two-course hot breakfast while watching the morning light bounce off the magnificent Parachute Creek and Mount Logan. Take in the red rock formations lining the cliffs in Ruby Canyon and look out for Mount Garfield. At 6,600 feet, it's the highest point of the Book Cliffs and easy to spot. These sandstone cliffs and mountains stretch nearly 200 miles from west to east—another great reason to take more photographs!

The train continues to follow the Colorado River and crosses over the state line between Mack, Colorado, and Westwater, Utah. Watch for Mount Peale. It's the highest point of the La Sal Mountains at 12,726 feet. Due to their immense height, these mountains are usually snow-capped until early summer.

As the train reaches Moab, you'll be greeted by its brilliant red sandstone backdrop and get a first glimpse of the iconic Arches National Park—a 73,234-acre wonderland of geological marvels. Depart the train and travel to downtown Moab. The local guide joins

the group for the Moab adventure. Welcome to the scarlet city!

After lunch on your own in Moab, transfer to the property for a free afternoon and evening at Red Cliffs.

Overnight: Red Cliffs Lodge (B)

Day +4: Moab / Arches National Park / Canyonlands National Park / Moab

Tuesday, May 3, 2022

Following breakfast, set out for Arches National Park—featuring more than 2,000 natural sandstone arches. Observe the myriad of unusual rock formations, including Balanced Rock and the world famous Delicate Arch.

Next visit Canyonlands National Park—the largest national park in Utah—for guided sightseeing. Canyonlands' diverse landscape promises spectacular views of towering rock pinnacles and striking desert vistas. Over time, the Colorado River and its tributaries have carved intricate buttes and river beds into this beautifully rugged terrain.

Return to the lodge for dinner on your own and a restful evening.

Overnight: Red Cliffs Lodge (B)

Day +5: Moab / Grand Junction, CO / Flight to Phoenix, AZ / Main Program Begins

Wednesday, May 4, 2022

Following breakfast, transfer to Grand Junction for the flight to Phoenix to join fellow travelers on the main program. (B)

B = Breakfast, L = Lunch, D = Dinner

This pre-tour is not escorted by an Orbridge Expedition Leader. Included sightseeing is accompanied by a local guide. Space is limited, so it's recommended to reserve early for best availability.

(Itinerary subject to change.)

Activity Level:

Moderate

The majority of the program's activities will take place outdoors and a fair amount of walking on varying terrain is to be expected. Many of the parks have dirt trails—but they are usually fairly smooth for walking—and some do have paved pathways and boardwalks.

It is our expectation that guests on this program are able to walk a mile at a moderate pace, get in and out of a motor coach, and walk up a flight of stairs without assistance.

Guests should be comfortable boarding and disembarking trains without assistance, walking and moving between cars while the train is in motion, and navigating steep, narrow stairs to the upper level of the observation car. Activities take place at a high elevation.

Accommodations:

The Oxford Hotel



April 30

First opened in 1891, The Oxford Hotel is one of Denver's most notable historic properties, having served famous guests, including President Theodore Roosevelt and the Dalai Lama. Ideally located in the bustling LoDo neighborhood, in close proximity to local attractions, it offers an inviting respite that combines historic charm with contemporary convenience. No two rooms are exactly alike, sporting décor both lavish and era-themed, featuring a mix of early 20th-century French, English, Victorian, and American influences.

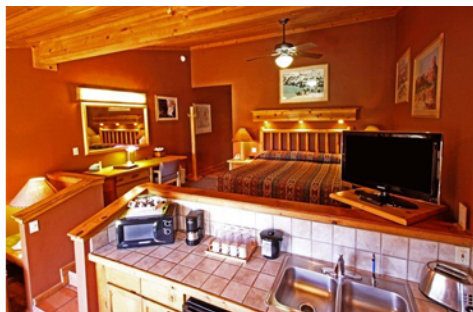
Room Amenities: Individual climate control, writing desk and chair, flat-screen TV, complimentary Wi-Fi, alarm clock, phone, coffee maker, minibar, iron and ironing board, and en suite bathroom with sundries and hair dryer.

Glenwood Springs

May 1

Accommodations in Glenwood Springs are determined by *Rocky Mountaineer*. Glenwood Springs' properties are considered moderate two- or three-star hotels or motor inns, satisfy our standards of cleanliness and comfort, and are the best available in the area.

Red Cliffs Lodge



May 2 - May 3

Located in Moab, Red Cliffs Lodge is a true example of an Old West-style property with modern amenities. Nestled on the banks of the Colorado River, enjoy the panoramic views of the surrounding 2,000-foot sheer red rock cliffs.

Cool off in the swimming pool, take a dip in the hot tub, or enjoy a game of tennis, volleyball, or horseshoes. And don't forget to check out the Moab Museum of Film and Western Heritage, featuring 100 years of colorful cowboy life and history alongside Hollywood movie memorabilia dating back to the late 1930s.

Room Amenities: Individual climate control, private patio, kitchen area, TV, DSL internet connection, phone, coffee maker, and en suite bathroom with sundries and hair dryer.

Note: The lodge does not have an elevator.

(Accommodations subject to change.)

What's Included:

- 1 night accommodations at The Oxford Hotel (or similar) in Denver
- 1 night accommodations in Glenwood Springs (hotel determined by *Rocky Mountaineer*)
- 2 nights at Red Cliffs Lodge (or similar)
- 4 breakfasts and 1 lunch
- *Rocky Mountaineer* rail transport with SilverLeaf or SilverLeaf Plus Service
- Guiding services of a local guide
- Admission to Arches and Canyonlands National Parks, included guided touring
- Private transportation for included park activities
- Gratuities to *Rocky Mountaineer* staff, local guides, drivers, and porters
- Internal airfare from Grand Junction to Phoenix
- Airport transfer for guests arriving during the suggested times



Southwest National Parks

MAY 04, 2022 — MAY 12, 2022

PRE-TOUR: APRIL 30, 2022 — MAY 04, 2022

PROGRAM RATES*

Double: \$4,395

Single: \$5,995

Optional Grand Canyon Helicopter
Tour: \$329/person

PRE-TOUR RATE**

SilverLeaf: \$2,995

SilverLeaf Plus: \$3,495

SilverLeaf Single: \$4,495

SilverLeaf Plus Single: \$4,995

Reserve by Credit Card:

Online: ncsu.orbridge.com

Phone: (919) 515-0508

Email: hart@ncsu.edu

Reserve by Check:

Made payable to **Orbridge, LLC**

Mail to: NC State Alumni Association

Box 7503, NC State University

Raleigh, NC 27695-7503

GUEST INFORMATION:

Guest #1 Name (Title/Salutation): _____

Email: _____ Class Year: _____

Home Phone: _____ Alt. Phone: _____

Address: _____

City: _____ State: _____ Zip: _____

Guest #2 Name (Title/Salutation): _____

Email: _____ Class Year: _____

Home Phone: _____ Alt. Phone: _____

DEPOSIT PAYMENT:

☐ Check ☐ ACH (Automated Clearing House) ☐ MasterCard/Visa ☐ American Express ☐ Discover

Card #: _____ Exp. Date: _____ CVV: _____

Name (as printed on card): _____

Billing Address (if different from above): _____

City: _____ State: _____ Zip: _____

DEPOSIT:

_____ guests joining pre-tour (\$500/person) +

_____ guests joining program (\$850/person) = **TOTAL DEPOSIT: \$** _____

OPTIONAL GRAND CANYON HELICOPTER EXCURSION (added to your final invoice):

_____ guests joining optional excursion

I/we have read, understand, and agree to the full Terms & Conditions at terms.orbridge.com and the COVID-19 Acknowledgement at orbridge.com/wellness; and I/we agree that Orbridge, LLC is authorized to charge my credit card above and/or take my/our deposit for this program.

Signature: _____ Date: _____

**Special group rate; limited offer. Rate is per person based on double occupancy except where noted as Single, in U.S. dollars. Single availability limited. Airfare not included.*

***Pre-tour rate is per person based on double occupancy except where noted as Single, in U.S. dollars. Single availability limited. Internal airfare from Durango to Phoenix is included. Airfare otherwise not included.*

Terms and Conditions

**THE FOLLOWING TERMS AND CONDITIONS ARE EFFECTIVE JANUARY 1, 2021,
AND APPLY TO NEW RESERVATIONS RECEIVED BY ORBRIDGE ON OR AFTER JANUARY 1, 2021.**

Note: Travel credits and transfers are subject to the Terms and Conditions agreed upon at the time of the original reservation.

ORBRIDGE® TERMS AND CONDITIONS, RELEASE AND BINDING ARBITRATION AGREEMENT

This Agreement includes contractual terms and conditions and releases Orbridge, LLC from liability. Any payment to Orbridge, including but not limited to deposits or full payments, constitutes your acknowledgement of, and agreement to, this Terms and Conditions, Release and Binding Arbitration Agreement Orbridge set forth below and in subsequent tour documents.

Limitation of Responsibility. Orbridge LLC, its shareholders, directors, officers, employees and affiliates (collectively, "Orbridge"), does not own or operate any entity that provides goods or services for your trip including, for example, ownership or control over hotels or other lodging facilities, airline, vessel, bus, van or other transportation companies, local ground operators, providers or organizers of optional excursions or equipment used thereon, food service or entertainment providers, etc., even if they use the "Orbridge LLC" or "Orbridge" name. All such persons and entities are independent contractors. As a result, Orbridge is not liable for any negligent or willful act or failure to act of any such person or entity, or of any other third party. Without limitation, Orbridge is not responsible for any injury, loss, or damage to person or property, death, delay or inconvenience (collectively, "losses") in connection with the provision of any goods or services occasioned by or resulting from, but not limited to, acts of God, acts of government, force majeure, acts of war or civil unrest, insurrection or revolt, strikes or other labor activities, criminal or terrorist activities of any kind, or the threat thereof, overbooking or downgrading of accommodations, structural or other defective conditions in hotels or other lodging or vessel facilities, mechanical or other failure of airplanes or other means of transportation or for any failure of any transportation mechanism to arrive or depart timely or safely, dangers associated with or bites from animals, pests or insects, marine life or vegetation of any sort, dangers incident to recreational activities such as scuba diving, snorkeling, paddle boarding, surfing, swimming, kayaking, sailing, canoeing, rafting, hiking, bicycling, rock climbing, etc., sanitation problems, food poisoning, lack of access to or quality of medical care, difficulty in evacuation in case of a medical or other emergency, illness, epidemics, pandemics or the threat thereof or for any other cause beyond the direct control of Orbridge. In addition, I release Orbridge from its own negligence and assume all risk thereof.

Rates. Program rates are based on minimum participation levels, current fares and costs (air, water, land, rail), tariffs and currency values. While Orbridge does everything possible to maintain the listed program rates, they are subject to change effective immediately upon posting unless otherwise specified by Orbridge. In the case of invoicing errors, we reserve the right to re-invoice with the correct pricing.

Reservations, Deposits and Final Payment. To secure your reservation, deposits are due upon placing a reservation as follows: (1) \$850 per person per program and \$500 per person per pre-tour and/or post-tour except for programs noted in (2) and (3); (2) \$2,500 per person for Antarctica Discovery and Trans-Siberian Railway and \$500 per person per pre-tour and/or post-tour; (3) a non-refundable \$1,500 per person is due for Tanzania Wildlife Safari's Rwanda pre-tour. Deposits are payable by check, automated clearing house ("ACH"), wire transfer or major credit card.

Final payment, including any pre-tour and/or post-tour, optional excursion(s) fees and optional electives, is payable by check, ACH or wire transfer, and is due for: (1) all programs except Antarctica Discovery and Trans-Siberian Railway—no later than 90 days prior to the program's scheduled departure date; (2) Antarctica Discovery and Trans-Siberian Railway—no later than 150 days prior to the program's scheduled departure date.

If your reservation is made between the final payment due date and the program's scheduled departure date, the full cost of the program, plus any pre-tour and/or post-tour, optional excursion(s) fees and optional electives, is due at the time of registration, payable by check, ACH or wire transfer.

Final payments made by credit card for departures in 2021 are subject to a 2% transaction fee.

If final payment is not received by Orbridge by the final payment due date, Orbridge may, at any time and with or without notice, cancel your reservation in its sole discretion with no right of refund.

Reservation Cancellations and Refunds. All cancellations must be submitted to Orbridge in writing and will be processed as follows:

(a) For all programs except those noted in (b) and (c), if the cancellation notice is received by Orbridge more than 90 calendar days prior to the program's scheduled departure date, all monies paid to Orbridge for the main program and for any pre-tour and/or post-tour will be refunded in full. If the cancellation notice is received by Orbridge between 90 and 60 days prior to the scheduled departure date, a 25% cancellation fee will be applied to the full cost of the program, including any pre-tour and/or post-tour, and the balance will be refunded. If the cancellation notice is received by Orbridge between 59 and 30 days prior to the scheduled departure date, a 50% cancellation fee will be applied to the full cost of the program, including any pre-tour and/or post-tour, and the balance will be refunded. If the cancellation notice is received by Orbridge within 29 days prior to the scheduled departure date, a 100% cancellation fee will be applied to the full cost of the program, including any pre-tour and/or post-tour.

(b) For Antarctica Discovery and Trans-Siberian Railway, if the cancellation notice is received by Orbridge more than 180 calendar days prior to the scheduled departure date, all monies paid to Orbridge for the main program and for any pre-tour and/or post-tour will be refunded in full. If the cancellation notice is received by Orbridge between 180 and 150 days prior to the scheduled departure date, a 25% cancellation fee will be applied to the full cost of the program, including any pre-tour and/or post-tour, and the balance will be refunded. If the cancellation notice is received by Orbridge between 149 and 120 days prior to the scheduled departure date, a 50% cancellation fee will be applied to the full cost of the program, including any pre-tour and/or post-tour, and the balance will be refunded. If the cancellation notice is received by Orbridge within 119 days prior to the scheduled departure date, a 100% cancellation fee will be applied to the full cost of the program, including any pre-tour and/or post-tour.

(c) All payments made for Tanzania Wildlife Safari's Rwanda pre-tour are non-refundable at all times.

In addition to and not in lieu of the foregoing, a Cancellation Fee equal to 100% of the carrier charge applies to all non-refundable airfares due to your cancellation made at any

time prior to the scheduled program departure date, as applicable. Refunds, if any, will be processed within 30 calendar days of our receipt of your written notice.

Travel Insurance. Orbridge strongly recommends that you purchase travel and cancellation insurance to protect your investment in the event of unexpected or unforeseen circumstances. In addition, we recommend that you consider obtaining a policy(ies) that will cover emergency medical evacuation insurance and cancel for any reason insurance. Travel and cancellation insurance policies and dates by which policies must be purchased vary by provider/insurer, maximum coverage (including cancel for any reason) is generally only available for purchase within 14 days of your reservation being confirmed. It is advised to determine your insurance needs and make necessary arrangements soon after reserving on tour. If you do not have, but are interested in purchasing, travel and cancellation insurance please contact us.

Program Cancellations or Postponements. All programs are subject to cancellation or postponement by Orbridge prior to the scheduled departure date for reasons such as, but not limited to, insufficient participation, or logistical problems that, in Orbridge's sole judgment, may impede program operations or represent conditions or events that may expose program guests and/or Orbridge to undue risk of harm, injury, damage or inconvenience. In the event of program cancellation or postponement by Orbridge, Orbridge may offer you alternative arrangements such as the option to join the same tour on a different date or a different tour. If the price of your alternative booking is lower than your original booking price, Orbridge will refund the difference within 30 days of the alternative program's departure date. If it is higher than your original booking price, Orbridge will invoice you the difference and you will be responsible therefor. Transferred guests are subject to the terms of the original tour. Except for force majeure, if a program is cancelled or postponed by Orbridge, Orbridge will refund all payments made within 30 calendar days of notice of program cancellation or postponement if an alternative arrangement is not offered.

Itineraries. Accommodations, the itinerary, travel directors or expedition leaders, lecturers, hosts, faculty or organization representative, and arranged excursions are subject to change or substitution at any time due to unforeseen circumstances or circumstances beyond Orbridge's control. Reasonable efforts will be made to operate programs as planned, however adjustments, substitutions and changes may occur after the final itinerary has been issued. Orbridge may, in its sole discretion, withdraw a program or any part of it, make such alterations or substitutions to the itinerary or program inclusions as it deems necessary or desirable, and pass on to program participants any expenditures or additional costs caused by any such adjustments, or by delays or events beyond its reasonable control.

Not Included. Unless otherwise specifically noted in the itinerary, program prices do not include the following expenses, which if applicable are your sole responsibility to pay and satisfy: trip cancellation insurance and passenger travel protection plan; domestic, international, and internal airfares except as indicated in program inclusions; transfers and luggage handling fees except in connection with scheduled group flights; costs associated with obtaining passports or entry visas; airport departure taxes; airline ticketing fees; airport transfers when arriving/departing on other than scheduled group dates; excess baggage charges; any new value added taxes or other taxes added to program costs by applicable governmental authorities; gratuities to drivers, guides, or ship's crew not specified; meals and beverages other than those specified as being included in the itinerary; sightseeing not included in the itinerary; personal expenses such as laundry, communication charges and optional activities (which are subject to availability); ship, air, or transportation fuel surcharges, if applicable; any items not on the "included" list of the tour documents

Health and Fitness to Travel. Through your participation in your tour, you assume responsibility for your own health, safety, and welfare and acknowledge that Orbridge cannot absolutely guarantee your safety or health. Your physician can provide guidance on your personal health risk and precautions to take while traveling. Some programs include physically active elements. To enjoy these programs as intended, a minimum level of fitness is required and Orbridge will require all guests to follow local, state, national and/or World Health Organization health and safety mandates. Accordingly, you must be in good physical and mental condition to participate. You represent that you have no physical, mental or other condition, impairment or disability that may or will cause or create a risk of injury or other hazard to yourself or others in respect to any aspect of the program you have selected. Orbridge may, in its sole discretion, limit, restrict or prohibit from participation in any aspect of any program any individual that it considers in its sole discretion to be impaired or unsuitable due to fitness level. In addition, Orbridge may, in its sole discretion and at the participant's sole expense, remove the guest from the program, or restrict the program-related activities of any individual whose physical or mental condition may or is likely to cause a hazard to himself/herself or others, or otherwise impair the enjoyment of other program participants. Any physical condition requiring special attention, diet, or treatment must be reported in writing to Orbridge at the time a program reservation is made. Should you have any questions or need any clarification about a specific program, please ask for details at the time of registration. Orbridge will try to accommodate your situation if possible.

Accessibility. Orbridge cannot guarantee that the transportation, lodging, and entertainment/sightseeing accommodations will be accessible to all persons regardless of their physical and mental condition. In addition, many of the activities involved in each program include walking or the like for some distance on uneven ground or pavement or moving water as well as the ability to walk up and down stairs without assistance. Should any individuals seeking to participate in a travel opportunity need special accommodations to ensure their enjoyment of the trip, kindly provide notice at the time the reservation is submitted, and we will see if your participation is feasible. Please understand that the Americans with Disabilities Act is inapplicable outside the United States.

At the time of reservation, Orbridge needs to be notified to determine if the special needs of an individual traveler can be met through special arrangements. It is possible that minor modifications to the services can be provided, but only if Orbridge is made specifically aware of anticipated needs. This notification should be made in writing no less than two weeks prior to the planned travel. Neither Orbridge nor any of the providers of transportation, lodging, or other services can provide special accommodations without this advance notice.

Where an individual with certain specific needs will be traveling with a group, it is necessary for other members of that person's group to be available to assist as necessary. Neither employees of Orbridge nor any suppliers of services can allow any of their employees to provide physical assistance to any guests.

Travel Advisories. The State Department and the Centers for Disease Control periodically issue statements and advisories about risks to travelers. These statements are country specific and contain important information. The State Department information can be found at www.travel.state.gov, and the CDC statements can be found at <http://www.cdc.gov>. Orbridge highly recommends everyone to review these sites.

Children. Orbridge welcomes the participation of children in most of its programs. However, in the event you do include your children or other minors for whom you serve as legal guardian ("Dependents") in your travel plans, you hereby agree that you are and shall be at all times solely responsible for their care, actions, safety and protection during the program and any pre-tour and/or post-tour. Should you have any questions whether a particular program or inclusion is possible or suitable for your Dependent(s), please contact us.

Baggage. Program rates include the price of one piece of policy-compliant baggage per person during the land, cruise or rail portion of the program only unless specified in the itinerary. Air carriers and motor coaches often impose significant other restrictions or limitations on the number of pieces, size and weight of luggage and may reject or impose additional fees on luggage exceeding such limitations or restrictions. All such fees are your sole cost and responsibility. In addition and regardless of location or transportation method, your baggage and personal effects are and shall at all times be at your sole risk throughout the entire program. Please check with your air carrier for other applicable baggage restrictions and limitations.

Travel Documents. All guests are responsible for possessing and maintaining necessary travel documents. These documents shall be valid under state and federal law and as required by foreign countries being visited. Orbridge is not responsible for invalid travel documents and repercussions thereof.

For U.S. citizens, valid passports are required for travel to foreign destinations and some countries require specific visas prior to entry. Please direct any questions in respect to visa requirements to Orbridge, which shall use commercially reasonable efforts to provide answers as a courtesy, provided that it shall remain your sole responsibility and obligation to obtain and verify that you have all required travel documents, including visas, necessary and appropriate for the program location(s) and sufficient blank pages in your passport for visas and immigration stamps. In addition, some countries require your passport to have an expiry date of not less than six months after your anticipated return to the United States. Orbridge disclaims all liability for any expenses or costs you may incur due to your prohibition or restriction from entering a country on the program itinerary or reentering the United States at the conclusion of the program. If travel documents fail to meet these requirements, boarding of aircraft or ship to any international destination may be denied.

and entry into such countries may be denied.

Photos and Videos. Orbridge may take photographs and/or video of its trips and participant grants Orbridge permission to do so and for it to use such for promotional or commercial use without payment of any compensation to participant. In addition, Orbridge may use, without compensation, any photographs or video taken by tour participants and submitted to Orbridge or to SmugMug without payment of any compensation. In submitting any such photographs or videos to Orbridge or SmugMug, participant warrants that he or she took the image and that the dissemination of same does not violate the copyright rights of any person.

Data Rights, Permissions. Data collected and/or derived by Orbridge resulting from your use of the Website is the sole and exclusive property of Orbridge and may be used in any manner consistent with its Privacy Policy located on Orbridge's website. By submitting to Orbridge a digital or hard copy form that includes your personal contact information, including without limitation, your email address and telephone number(s), you give Orbridge and any other entity identified on the form permission to use that information to contact you and as otherwise may be described on the form and/or in the Privacy Policy.

Other. Dates, program details and costs are based on tariffs, exchange rates and other information current at the time of printing, but are subject to change at any time. While we do not anticipate material revisions of the itinerary or its included features, we do reserve the right to substitute accommodations or modes of transportation and to make any changes in the itinerary Orbridge, in its sole discretion, deems necessary and in that case any additional expense or cost will be paid by the individual guest. Your baggage and personal effects are your sole responsibility at all times. It is prohibited by federal law and Orbridge policy to bring illegal drugs, firearms, or other contraband (including marijuana for medical or recreational purposes) on any program.

Orbridge may at any time and without notice modify these terms and conditions, and any modification so made will be effective for all reservations made from and after the posted Effective Date.

In the event any term in these terms and conditions is deemed unenforceable the unenforceable clause shall be interpreted to give effect to the parties' intentions to the greatest enforceable extent, and all other provisions hereof shall remain fully enforceable according to their terms.

Binding Arbitration. I agree that any dispute concerning, relating, or referring to this contract, the brochure, or any other literature concerning my trip, or the trip itself shall be resolved exclusively by binding arbitration in Seattle, Washington, either according to the then existing commercial rules of the American Arbitration Association or pursuant to the Comprehensive Arbitration Rules & Procedures of the Judicial Arbitration and Mediation Services, Inc. (JAMS). Such proceedings will be governed by substantive (but not procedural) Washington law. The arbitrator and not any federal, state, or local court or agency shall have exclusive authority to resolve any dispute relating to the interpretation, applicability, enforceability, conscionability, or formation of this contract, including but not limited to any claim that all or any part of this contract is void or voidable. By agreeing to these terms and conditions, both parties are waiving their right to a trial by jury. Any arbitration commenced against Orbridge must be on behalf of only the individual(s) to this Agreement and his or her immediate family members travelling with them, such as a spouse or child. Under no circumstances can participant be part of a class or other joint action.

Acceptance of Contract. ANY PAYMENT TO ORBRIDGE, INCLUDING BUT NOT LIMITED TO DEPOSITS OR FULL PAYMENTS, CONSTITUTES YOUR ACKNOWLEDGEMENT OF AND AGREEMENT TO THESE TERMS AND CONDITIONS SET FORTH ABOVE AND IN MORE SPECIFIC TOUR DOCUMENTS.

©2021 ORBRIDGE LLC. All rights reserved.

ORBRIDGE, ORBRIDGE DESTINATION SPECIALISTS, ORBRIDGE GROUP, and OBR are service marks of Orbridge LLC. The service marks and trademarks of any supplier appearing in these materials are owned by each respective company.

WAST# 602828994; CAST# 2098750-40

(v. 010121)