

# **Discover Southeast Alaska**

**by Small Ship**





For details or to reserve:

[ncsu.orbridge.com](https://ncsu.orbridge.com)

(800) 627-2586

AUGUST 20, 2021 – AUGUST 27, 2021

PRE-TOUR: AUGUST 15, 2021 — AUGUST 20, 2021

# DISCOVER SOUTHEAST ALASKA

The unyielding forces of nature are on full display throughout Alaska's Inside Passage. Mountains erode by the crushing force of massive glaciers, icebergs drift across aquamarine waters, and the life cycles of flora and fauna are compressed into the scant weeks of an arctic summer. During this expedition cruise, navigate narrow channels and waterways with skilled naturalists at your side—ready to encounter Alaska's abundant wildlife, breathtaking peaks and fjords, and ice-blue glaciers of unfathomable proportions.



Dear Friends,

Please join us for a summertime expedition through some of nature's more secluded landscapes as we discover the remote inner reaches of Alaska's Inside Passage aboard the 76-guest *Chichagof Dream*.

Enjoy the agility and flexibility of small-ship travel, up-close encounters with wildlife, stunning scenery, cultural experiences, and the guidance of two expert naturalists including an Orbridge Expedition Leader.

Capture the sight of whales breaching next to your boat, bears fishing along the shoreline, and eagles

looking down from their nests—all part of nature's amazing show.

This program also offers an optional pre-tour to Denali National Park. Explore this vast and stunningly beautiful wilderness—home to Denali, the highest mountain in North America. Ride the Alaska Railroad, stay at a hilltop lodge with panoramic views just north of the park entrance, and learn how this magnificent landscape became one of our nation's most breathtaking conservation areas.

Space is limited. With significant savings of more than \$1,000 per couple, we anticipate this tour will fill quickly. Be certain to reserve your spot today.

Reserve today online at [ncsu.orbridge.com](https://ncsu.orbridge.com), by calling (800) 627-2586 or (919) 515-0508, or by emailing [hart@ncsu.edu](mailto:hart@ncsu.edu).

Best regards,

A handwritten signature in cursive script that reads "Kathy Hart". The signature is written in black ink and is positioned below the text "Best regards,".

Kathy Hart  
WolfTreks Travel Director  
NC State Alumni Association

*PS: Orbridge and NC State take your health and wellness seriously. Visit [orbridge.com/wellness](https://orbridge.com/wellness) to learn about our enhanced COVID-19 protocols.*

*Please note: The information contained in this document is current as of 9/8/2020*

## Program Highlights:

- See the spray of whales only yards away and venture into secluded inlets as you get up close to nature, whether from the decks of the *Chichagof Dream* or aboard its skiffs and kayaks.
  - Accompanied by expert naturalists, including an Orbridge Expedition Leader, learn surprising details about animal behavior, glacier activity, and the wealth of natural spectacles along these protected waters.
  - Learn about Alaska's culture and living history during a Native dance performance at a Tlingit Clan House.
  - Cruise around Glacier Bay National Park alongside a Native Huna Tlingit Cultural Heritage Guide.
  - Visit a salmon hatchery, the Alaska Raptor Center, and Sitka National Historical Park.
  - Take a guided tour of the Norwegian fishing community of Petersburg.
  - Joined by a Park Ranger, cruise the pristine waters of Glacier Bay National Park and Preserve to see the sanctuary's deep fjords, tidewater glaciers, and snow-capped mountain ranges.
  - **What's included:** 7 nights aboard the *Chichagof Dream*; all onboard hand-crafted meals: 7 breakfasts, 6 lunches, and 7 dinners—including a special Captain's Farewell Dinner, and complimentary wine and beer at dinner; an onboard lecture program and educational guidance of two expert naturalists, including an Orbridge Expedition Leader, and a Park Ranger and Native Huna Tlingit Cultural Heritage Guide during a visit to Glacier Bay National Park; guided kayaking, hiking, walking, skiff excursions, and wildlife viewing; all port fees and entry fees to parks, preserves, museums, attractions, and special excursions as described in the itinerary; gratuities for Orbridge Expedition Leader, airport transfer drivers, and drivers/guides on included land excursions; airport transfers for guests arriving and departing during the suggested times.
-



## Itinerary:

### **Day 1: Arrive in Sitka – Embarkation**

Friday, August 20, 2021

Today, travel to Sitka from your home city or from Anchorage if you visited Denali National Park on the six-day Orbridge Pre-Tour.

After arriving, immerse yourself in the Tlingit culture at a Sheet'ka Kwaán Naa Kahídi (which roughly translates to "The clan house for all the people of Sitka") dance show.

Later, visit the Alaska Raptor Center—Alaska's foremost bald eagle hospital and educational center—with a local guide. Then, venture to Sitka National Historical Park, where you'll learn the history of the area that served as the battle site between Russian traders and the indigenous Tlingit. Stand in awe before the massive totem poles lining the park's coastal trail, and gain insight into their powerful symbols.

Late afternoon, transfer to the *Chichagof Dream* for embarkation. Enjoy your first dinner on board as you get to know your Expedition Leader, naturalists, crew, and travel companions.

*Overnight: Chichagof Dream (D)*

### **Day 2: Icy Strait / Chichagof Island**

Saturday, August 21, 2021

Relax on deck with your binoculars and a hot cup of cocoa as you sail through Icy Strait in search of wildlife, including orcas (killer whales), Steller sea lions, seals, porpoises, and magnificent humpback whales. Along the shore, perhaps catch sight of bald eagles in the treetops. Choose from activities such as kayaking, skiff rides, and hiking.

*Overnight: Chichagof Dream (B,L,D)*

### **Day 3: Glacier Bay National Park**

Sunday, August 22, 2021

Arrive in Glacier Bay National Park, where scientists have found exposed rock that's believed to be more than 200 million years old. While at Bartlett Cove, visit the park lodge and visitor center or participate in a guided forest hike. Meet a National Park Service Ranger and a Native Huna Tlingit Cultural Heritage Guide, who will come aboard and accompany you during your time in Glacier Bay National Park. Watch for puffins, sea lions, harbor seals, sea otters, mountain goats, bears, and eagles—and take in some of the most spectacular scenery in Alaska.

*Overnight: Chichagof Dream (B,L,D)*

### **Day 4: Eastern Baranof Island / Lake Eva**

Monday, August 23, 2021

Spend the morning cruising through the Peril Strait to Hanus Bay. In the afternoon, enjoy free time at Lake Eva to kayak, take a guided hike, or join a skiff excursion.

*Overnight: Chichagof Dream (B,L,D)*

### **Day 5: Hidden Falls**

Tuesday, August 24, 2021

During a rare tour of the Hidden Falls Hatchery, learn about the release of Chinook, coho, and chum salmon fry and smolts, and the vital role fishing has held in Alaska for centuries. In the evening, share the day's adventures with your fellow travelers over dinner.

*Overnight: Chichagof Dream (B,L,D)*

### **Day 6: Petersburg / Frederick Sound**

Wednesday, August 25, 2021

Arrive early at the charming fishing village of Petersburg, founded by a Norwegian fisherman in the late 1800s. Tour the town with a local guide and see the local youth perform a spirited dance celebrating their Norwegian heritage. Explore the town on your own, then return to the *Chichagof Dream* for lunch. Afterward, take a skiff excursion for a beautiful guided hike at Petersburg Creek across Wrangell Narrows. Depart Petersburg in the late afternoon and sail through Frederick Sound in search of whales.

*Overnight: Chichagof Dream (B,L,D)*

### **Day 7: Tracy Arm Fjord**

Thursday, August 26, 2021

Today experience Tracy Arm, a narrow fjord that winds through towering mountains and

massive glaciers. Witness the “calving” of glaciers as gigantic chunks of ice break and crash into the water. Watch for harbor seals that often dot the ice floes and mountain goats on nearby perches. In the afternoon and conditions permitting, glide through and discover coves or bays by kayak or skiff, soaking in the splendor of some of the most untouched wilderness in the world. Recount your trip highlights with fellow travelers tonight during a Captain's Farewell Dinner.

*Overnight: Chichagof Dream (B,L,D)*

## Day 8: Auke Bay / Juneau – Disembarkation

Friday, August 27, 2021

Disembark this morning after breakfast and take your complimentary shuttle to the airport for your flight home, or to your accommodation if you reserved a post-night in Juneau. (B)

B = Breakfast, L = Lunch, D = Dinner

(Itinerary subject to change.)

---

## Activity Level:

### Moderate

This program offers a variety of activities: skiff rides, walking, hiking, and kayaking. Activities are not strenuous for guests with average mobility. Walks and hikes are leisurely in pace to allow guests the opportunity to see and learn as much as possible about the region. Skiffs provide the mode for much of the exploration on this program and sure-footed guests can enter/exit them with little trouble. The *Chichagof Dream* crew is diligent in assisting guests while boarding and exiting the ship and small craft. Guests with no previous experience can easily handle the double kayaks. **We expect that guests on this program can walk with good balance and go up and down stairs easily without assistance, as the *Chichagof Dream* does not have an elevator.**



### Early Reservation Bonus<sup>†</sup>

Reserve your space early and receive a valuable collection of items such as maps, videos, books and field guides for your journey, selected by Orbridge's discriminating experts in the field, absolutely free.



---

## What's Included:

- 7 nights aboard the *Chichagof Dream*
  - All onboard hand-crafted meals: 7 breakfasts, 6 lunches, and 7 dinners—including a special Captain's Farewell Dinner, and complimentary wine and beer at dinner
  - An onboard lecture program and educational guidance of two expert naturalists, including an Orbridge Expedition Leader, and a Park Ranger and Native Huna Tlingit Cultural Heritage Guide during a visit to Glacier Bay National Park
  - Guided kayaking, hiking, walking, skiff excursions, and wildlife viewing where humpback whales, orcas, brown bears, Steller sea lions, harbor seals, sea otters, arctic terns, bald eagles, and other populations are frequently spotted
  - All port fees and entry fees to parks, preserves, museums, attractions and special excursions as described in the itinerary
  - Gratuities for Orbridge Expedition Leader, airport transfer drivers, and drivers/guides on included land excursions
  - Airport transfers for guests arriving and departing during the suggested times
-

## Your Guide(s):

### Orbridge Expedition Leader



On this program, you will have the benefit of an expert Expedition Leader with extensive local knowledge and experience as a cultural, historic, and naturalist interpreter. With their contribution of exceptional know-how and enthusiasm adding depth to your experience, enjoy the cultures and locations you explore with added confidence, understanding, and appreciation.

---

# Program Accommodations:

## Chichagof Dream



August 20 - August 26

Accommodating 76 guests, the 207-foot *Chichagof Dream* was designed to go where large ships cannot—navigating guests to the best views possible of the surrounding nature-filled landscape. Experience Alaska up close as you watch for wildlife from skiffs or kayaks, and learn about the indigenous peoples of the region. On board the ship are your knowledgeable crew, Orbridge Expedition Leader, and expert naturalists who share their hospitality, uncanny knack for spotting wildlife, and fascinating secrets behind the bountiful beauty that surrounds you.

The ship's well-appointed, intimate, and unassuming style allows travelers to experience the true heart and soul of Alaska. The *Chichagof Dream* features expansive viewing areas on the bow and aft outdoor promenade decks, a hull design optimized for supreme comfort in Alaskan waters, and forward-facing windows in the spacious lounge that extend from the deck to the ceiling, offering panoramic views off the bow.

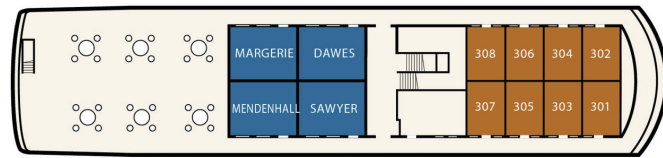
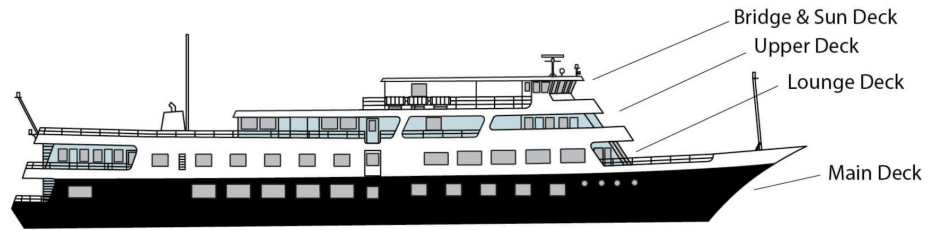
Enjoy a relaxed cruising speed ideal for viewing the endless surrounding fjords, glaciers, and wildlife. The ship offers complimentary expedition gear while touring, including rain jackets, rain pants, and boots. Plus, each stateroom is outfitted with binoculars. Nothing will be missed as you leisurely traverse the channels, bays, and islands of Southeast Alaska.

Every morning, indulge in early-riser pastries in the lounge. After each exciting day of exploration, enjoy delectable hors d'oeuvres and convivial conversation in the lounge before delighting in a five-star dining experience—where talented onboard chefs create mouthwatering masterpieces using fresh, locally sourced ingredients.

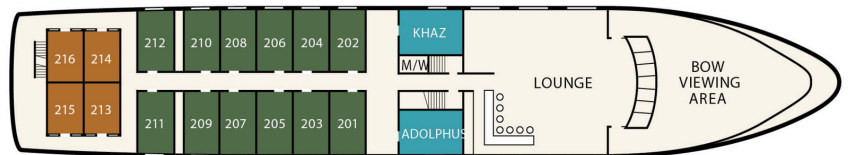
During free time, take advantage of the open wheelhouse policy. Stop in to visit the captain and officers on the bridge, view the charted course, hear ship-to-ship communications, and listen to stories from experienced Alaskan mariners.

Or experience the ship's Himalayan salt room, which are known for their holistic properties.

# Chichagof Dream / DECK PLAN



upper deck



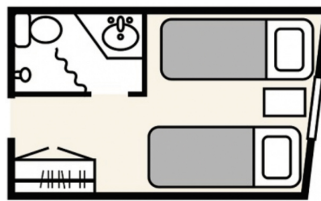
lounge deck



main deck

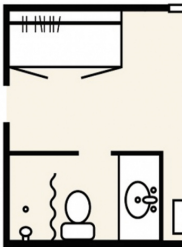
**A** Approx. 105 sq. ft.

Two twin beds, two porthole windows, spacious wardrobe, private bathroom with shower.



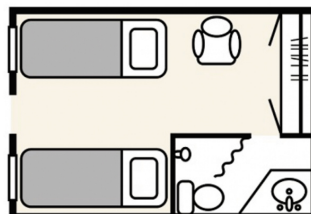
**Deluxe** Approx. 155 sq. ft.

One queen or two twin beds, one large picture window, spacious wardrobe, private bathroom with shower.



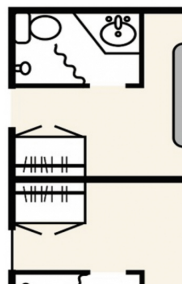
**AA** Approx. 109 sq. ft.

Two twin beds, one or two picture windows, spacious wardrobe, private bathroom with shower.



**Deluxe Suite (main deck)** Approx. 218 sq. ft.

Two-room suite (each with option of queen or two twin beds or bunk beds), large picture window, spacious wardrobe, two private bathrooms with showers.



(Accommodations subject to change.)

---

## What Guests Are Saying:

"The ship was the perfect size for a very personalized trip. Every meal was delicious and gorgeous, they totally treated us! The crew was incredible and a wonderful group of people. Everyone was so knowledgeable and friendly. It was a great balance of education, adventure and socializing."

—Eilidh S., Lakewood, CO

"The itinerary was excellent and well-paced, and the pre-tour was a great way to get a big picture view of Alaska before we got on the boat.

I did the small plane trip to Denali—landing on the glacier. We had clear sunny weather when we landed so it felt spiritual as well as beautiful. Well worth the extra cost.

My fellow travelers were curious and engaging and we had fun conversations and adventures along the way. One major surprise was the quality of the food on the boat. Every meal was excellent! The quality, variety and creativity made dining everyday a delight. I really valued the lectures and expertise of our guides."

—Roberta L., Raleigh, NC

"Fantastic ship and the crew was wonderful. Food was amazing—four star!! Lots of opportunities to see different things and make individual choices. Highlights were wildlife sightings, bears, humpbacks, orcas, otters, seals and sea lions and on and on. Wonderful trip—everything we hoped for."

—Ron & Terry D., Florissant, MO

"All the guides were excellent. Very professional and very committed to showing us the natural world that we encountered, from lichen to glaciers, from frogs to bears.

Best ship food I've had—and that includes a Trans-Atlantic cruise.

The experiences were all beyond our expectations!"

—Carol H., Granbury, TX

"The naturalists were amazing. They added a lot to the trip and were wonderful

folks. It was an amazing trip! Thank you!"

–Fred H. & Gail S., Wilmington, DE

"Can you tell that we enjoyed EVERY MINUTE of this trip? I would go again tomorrow if I could. A beautiful state, wonderful arrangements, accommodations, food, tours—a real joy for our 50th anniversary."

–David & Karen R., Athens, GA

"The trip was excellent in every respect. Our Orbridge guest services representative was helpful and responsive during pre-trip arrangements. Having binoculars, rain gear and boots available onboard was an extremely nice touch and much appreciated.

Itinerary and sites visited were uniformly interesting, beautiful and alive with arresting mammal sightings.

Our guides were exceptional—knowledgeable, personable and communicated with commitment and passion for the outdoors."

–Don F., Cambridge, MA

"Absolutely incredible. A wonderful experience for our family. The ship was comfortable, the rooms were cozy and the beds very comfortable, and the food was so good we thought we were in a fine restaurant. I can't say enough about the food. It was absolutely exceptional—in variety, quality, presentation and choices.

Our Expedition Leader was absolutely wonderful and so knowledgeable and helpful and caring. We would highly recommend her.

All members of our family—all 6 of us—felt the tour exceeded our expectations by far. We will never forget the calving of the glaciers and the turtling of the icebergs. And the whales! I would highly recommend this trip through Orbridge to others."

–Joseph N., West Hampton, NY

"What a wonderful experience. The trip was so much more than I imagined it would be—so much to see and learn about that part of Alaska.

From the time we boarded the ship until our departure, the captain and crew made us feel so at home and could not have been any better. Made for a very enjoyable trip. Travel on a small ship was a new and wonderful experience.

Excellent itinerary with interesting stops. I've been to the Inside Passage before on a large cruise ship but this was so much better.

Our guides were so knowledgeable and made for an interesting and fun trip.

This trip was the way to really see Alaska.”

–Rose K., Fredricksburg, VA

“A dream cruise. Everything we could have expected and more. Our Expedition Leader was always available, always pleasant, always knowledgeable. Great, great crew. Excellent accommodations.”

–Robert & Alice P., Manchester Center, VT

“Superior naturalists—so much wonderful education and attention!

Truly an exceptional trip. We enjoyed every aspect of our travels, and had a wonderful group of fellow travelers to accompany us. We loved it!”

–Dave & Joan K., Vancouver, WA

“Your guest services representative did a great job of keeping us informed about what was happening ahead of time. He was always happy to answer questions. I appreciated how seamlessly everything worked.

The Captain and his crew did an amazing job of getting us up close and personal with the glaciers... we had front row seats! The crew members were always so positive... this made the experience even better.

Our Expedition Leader did an amazing job! She went out of her way to find wildlife for us to view and was such a great source of information. Her enthusiasm for everything she saw made the trip even more enjoyable.”

–Mike and Karen S., Puyallup, WA



“Overall the educational content was outstanding; speaker/guides were informative, approachable, and interesting; baggage handling was extraordinary. This entire experience far exceeded our expectations.”

–Jill N., Troy, NY

“WONDERFUL PROGRAM!

The Captain and the rest of the crew were terrific in many ways. They safely guided us through the ice and took us close to the glaciers. Also, they invited us to the Bridge to enjoy the views and to share information about the depth of the water, radar, and life on the Bridge.

Our Expedition Leaders had great knowledge and desire to share with everyone in depth about everything every day! They were all wonderful.”

–Stanley B., White Bear Lake, MN

“The staff was very available for questions, kind and knowledgeable. The trip just flowed. We had an exceptionally wonderful group of folks from several colleges who all appreciated each other and bonded through the week. We were very touched with the quality of the wonderful relationships with the exceptional staff and leaders.

The small DIB trips were wonderful—close up to the rocks and waterfalls, moving around the icebergs. We learned so much and especially appreciate the experience of meeting and learning from our Glacier Bay National Park cultural interpreters.

We were blown away with the quality and creative food choices at each and every meal. Delicious early wake-up goodies and afternoon cookies, availability of tea, hot chocolate and apple cider were welcomed for those who stayed on the decks early morning through late night.

This was a lifetime dream trip. The opportunity to be with other college alums was very timely, as we were seriously planning an Alaska trip with a competitor of Orbridge. It seems the one we did was much more extensive and inclusive of culturally significant opportunities. We commend you for this.”

–Lynn M., Oakland, CA

“This trip is a remarkable once in a lifetime experience. All three of the expedition staff were remarkable. The entire experience far exceeded my expectations.”

–Mark M., Sherman, TX

“I really enjoyed all parts of the trip. It was well paced with lots of options. I liked the activities we chose in the park including the park dog presentation and a ranger walk. We saw a lot of wildlife on the bus portion.

Glacier Bay may have been my favorite due to the amount of wildlife we saw and the glacier calving.

Our expedition leaders were excellent. Very informative and interesting, organized good communicators, worked to make the trip a success for everybody.”

–Thekla M., Evanston, IL

“Orbridge provided excellent attention to details for this program.

Our expedition leaders were outstanding—excellent with everyone and showed an excellent level of concern and care. They made us feel as if we were the most important person. Great job by the team.”

–Nancy C., New Braunfels, TX

“The pacing of the trip was really perfect. Often on such trips with other groups it seemed there was too much crammed into the time allowed. I came for the wilderness and the options were all well worth our time and I never felt rushed or exhausted both on board ship and in Denali.

The staff and ship were all top notch and their friendliness and helpful attitude enhanced the trip in many ways! I'm not sure where you could have found any better team anywhere. They were ALL individually and collectively excellent in all respects (including appropriate humor) - many thanks to all!”

–Rhonda O., Cincinnati, OH

“Your staff is amazing in many ways. They are very knowledgeable, personable, and

fun to interact with. The breadth and scope of their knowledge is wonderful, and each one is a unique personality that works well with the others.

The crew was delightful, fun, personable and pleasant. Very professional and did a great job every day.

On board, the chef accommodated my husband's long list of food allergies with delicious and interesting meals. He enjoyed the meals thoroughly and didn't feel he missed out on anything. It was a great treat for him.

I have already recommended both Orbridge and the specific Alaska trip we took to many people.”

–Diane D., Roanoke, VA

“Orbridge guest services provided personal help, coordination, correspondence/communication (both phone and email), and arrival/departure support from our very first contact and reservation as well as in the several months prior to our departure.

The welcome reception was fun and informative, and neatly set the stage for all of us to meet new friends in the days and experiences to come! Our Expedition Leader's warm personality, National Park Service field work, years of natural science and resources background as well as extensive outdoor experiences across the United States, and wonderful good humor and laugh—all contributed to our trip and travel of a lifetime!

The Denali Pre-Tour combined with the Discover SE Alaska program overall experience has been very simply a trip and travel experience of a lifetime for us both. We'll cherish the care and completeness of the Orbridge educational itinerary, lodging, and, most of all, each of the Expedition Leader staff members.”

–Diane & Tom E., Traverse City, MI

Optional Pre-Tour:

# DENALI NATIONAL PARK



Journey into the scenic wilds of America's most northern state, through Alaska's rugged forests and wildlife. Your destination: the magnificent, six-million acre Denali National Park and Reserve. Familiarize yourself with the park, walking its trails with a guide, and choose from optional excursions to personalize your adventure. Keep binoculars close at hand: this dazzling and vast wilderness is home to Dall sheep, eagles, wolves, migrating caribou, and grizzly bears—and catching sight of them is a thrill not soon forgotten. A final highlight of this adventure includes an afternoon traveling aboard the historic Alaska Railroad with superior viewing from your upgraded GoldStar glass-dome seat.

---

## Itinerary:

### **Day +1: Arrive Fairbanks, Alaska**

Sunday, August 15, 2021

Welcome to Fairbanks! The city is also known as “The Golden Heart of Alaska,” a reference to the discovery of gold in 1902 and its location in Alaska’s interior. Meet your Orbridge Expedition Leader and traveling companions at a welcome reception, and prepare for your upcoming Denali activities and excursions.

*Overnight: Pike's Waterfront Lodge (R)*

### **Day +2: Fairbanks / Denali National Park**

Monday, August 16, 2021

Along with your Orbridge Expedition Leader, board a motor coach destined for Denali National Park, following the nearby Alaska Railroad route. Traverse through the scenic northern boreal forests of interior Alaska—where gold miners came to seek their fortune—enjoying a rich panoply of views of America's northernmost frontier. En route, visit the Trans-Alaska Pipeline viewpoint, stop for a tour at University of Alaska's Museum of the North, and continue to Denali along the George Park's Highway.

Upon arriving at the park, take a short walk with your Expedition Leader to the Denali National Park Visitor Center for a brief orientation. View the exhibits or sign up for ranger-led talks, hikes, and other activities available during your stay in Denali. Afterward, take the courtesy shuttle to Grande Denali Lodge. This evening, enjoy a lively dinner event where you'll explore fun and unique features of the park with a presenter from the Murie Science and Learning Center.

*Overnight: Grande Denali Lodge (B,D)*

**You may purchase the following optional excursions in advance from our Guest Services team to enjoy during your free time in Denali. We recommend you reserve early for best availability as space is limited.**

- Husky Homestead Dog Sled Tour: A behind-the-scenes look at champion Alaskan Huskies and their training with Iditarod four-time winner Jeff King.
- Denali Glacier Landing Flight: A 100-minute plane tour of Denali to view the continent's deepest gorge, glaciers, and surrounding peaks and valleys. Also land on one of Denali's pristine glaciers.
- Arctic Circle Flight: Enjoy expansive views of the Brooks Range, Yukon River, and Trans-Alaska Pipeline on this six-hour plane tour. After your flight crosses the Arctic Circle, land in the Yukon-Koyukuk region and walk with a local resident guide as you tour one of only a few year-round, lived-in communities located this far north.

*Normal Orbridge cancellation policies apply whereby optional excursions are non-refundable within 90 days of departure. Not all excursions listed may be available. Availability is subject to sufficient participation and weather conditions. We recommend you reserve early for best availability as space is limited. For flight excursions, weight and minimum age requirements apply. Individual dressed weight and birthdate must be provided at time of booking.*

**Day +3: Denali National Park Wilderness Excursion**

Tuesday, August 17, 2021

Today, travel 66 miles along the Denali National Park Road on a naturalist-guided, back-country adventure for incredible scenery and some of the best opportunities to view the majestic Mount Denali. This tour includes a walk inside the park, so make sure you have your binoculars ready as you watch for wildlife. Enjoy a box lunch in this special setting.

This evening is at your leisure.

Overnight: Grande Denali Lodge (B,L)

#### **Day +4: Denali National Park**

Wednesday, August 18, 2021

After breakfast, participate in one of the pre-purchased optional excursions or enjoy free time to explore Denali. Take advantage of the many self-guided hiking trails or informative ranger-led talks and activities offered in the park while marveling at the scenery.

Later, reconvene for wine and hors d'oeuvres as you listen to Alaskan homesteader, Jimmie Hendricks, as he relives his journey and lifelong dream to explore Alaska and make it his home. Be amazed by his years of training, hard work, determination, and eventual summiting of North America's tallest peak.

Overnight: Grande Denali Lodge (B,R)

#### **Day +5: Denali National Park / Anchorage**

Thursday, August 19, 2021

After breakfast and a morning at leisure, depart from Denali National Park on Alaska Railroad's flagship train, the *Denali Star*, traveling through one of the most scenic stretches of the world-famous Alaska Railroad. It cuts through the northern boreal forests of interior Alaska where gold miners came to seek their fortune. Enjoy the panoramic views as you travel in your reserved seat and upgraded GoldStar, glass-dome train car.

At 2,363 feet, Broad Pass is the highest point and a migratory route for caribou. After a brief stop in Talkeetna, delight in lunch and dinner aboard the train before arriving in Anchorage.

This evening, relax in your luxury hotel.

*Overnight: Hotel Captain Cook (B,L,D)*

#### **Day +6: Depart Anchorage**

Friday, August 20, 2021

Prepare for an early morning departure. Your group will take a complimentary transfer to the Anchorage International Airport and board the same flight to meet the Discover Southeast Alaska main program. (B)

R = Reception, B = Breakfast, L = Lunch, D = Dinner

*Pre-tour space is limited, so it's recommended to reserve early for best availability.*

(Itinerary subject to change.)

---

## Activity Level:

### **Moderate**

It is our expectation that guests on this program are able to walk a mile at a moderate pace, get in and out of a motor coach, and walk up a flight of stairs without assistance.

---

## Accommodations:

### Pike's Waterfront Lodge



August 15

Situated on the Chena River, Pike's Waterfront Lodge offers unbeatable views and warm, comfortable accommodations. Enjoy hotel amenities, including an aromatherapy steam room, fitness room, restaurant, cozy lounge, ATM, 24-hour guest laundry and gift shop.

*Room Amenities: Chena River view room, air conditioning, flat-screen cable TV, complimentary Wi-Fi, phone, microwave, mini-fridge, coffee and tea maker, safe, and en suite bathroom with hair dryer and Aveda® shampoo, conditioner, lotion, and soap.*

### Grande Denali Lodge



August 16 - August 18

The Grande Denali Lodge is located just north of the Denali National Park main entrance on the slopes of Sugarloaf Mountain with unparalleled views of the surrounding Denali wilderness and the Nenana River Canyon. Spacious guest rooms, on-site dining and dedicated staff make the Grande Denali Lodge the perfect place to launch all your adventures. Amenities include a restaurant, a bar and lounge, convenient shuttle services, a guest laundromat, complimentary Wi-Fi, and an espresso/snacks stand.

*Room Amenities: View room, air conditioning, cable TV, complimentary Wi-Fi, phone, coffee and tea maker, mini-fridge and en suite bathroom with shampoo, conditioner, lotion, and hair dryer.*



## Hotel Captain Cook



August 19

Built by former Secretary of the Interior and two-term Alaska Governor Walter J. Hickel to help Anchorage's economy recover from the devastating 1964 earthquake, this renowned hotel boasts Alaskan history from its reclaimed teak interior features to artifacts and art illustrations from Captain Cook's 18th-century voyage. Expect exceptional Alaskan hospitality and service at its four restaurants, on-site shops, athletic club, and spa.

*Room Amenities: Deluxe room, air conditioning, satellite TV, complimentary Wi-Fi, phone, coffee and tea maker, bathrobes and slippers, safe, and en suite bathroom with shampoo, conditioner, and hair dryer.*

(Accommodations subject to change.)

---

## What's Included:

- 1 night accommodation at Pike's Waterfront Lodge in Fairbanks, 3 nights accommodations at Grande Denali Lodge, and 1 night accommodation at Hotel Captain Cook in Anchorage
- 5 breakfasts, 2 lunches, 2 dinners, and 2 receptions
- Motor coach transportation from Fairbanks to Denali National Park
- Hotel courtesy shuttle between Grande Denali Lodge, the Denali Park Visitor Center, town, and the rail depot
- A full-day wilderness tour into Denali National Park (including a box lunch) with your Orbridge Expedition Leader and a Murie Science and Learning Center naturalist guide
- A lively dinner event with a special presentation from a Murie Science and Learning Center educator, plus an engaging discussion with Jimmie Hendricks, a colorful local who will share his experiences of homesteading and eventual summiting of Denali
- Transport aboard the distinguished Alaska Railroad with upgraded GoldStar Service, including reserved seating in the upper-level glass-dome car, priority seating in the dining room for lunch and dinner (with two alcoholic beverages/unlimited non-alcoholic

- beverages)
- Services of an Orbridge Expedition Leader
- Gratuities for Orbridge Expedition Leader, local guides, drivers, porters, housekeeping, and wait staff for included meals
- Transfers between the airport and hotel for guests arriving and departing during the suggested times



# Discover Southeast Alaska

AUGUST 20, 2021 — AUGUST 27, 2021

PRE-TOUR: AUGUST 15, 2021 — AUGUST 20, 2021

**EARLY RESERVATION BONUS†**

RESERVE BY **OCTOBER 30, 2020** TO RECEIVE A  
FREE ORBRIDGE EXPEDITION LIBRARY

### PROGRAM RATES\*

Category A: \$4,395  
Category AA: \$5,595  
Category AAA: \$5,995  
Deluxe: \$6,995  
Deluxe Suite (Main Deck): \$7,995  
Deluxe Suite (Upper Deck): \$8,995  
Single (Cat. AA): \$8,995

### PRE-TOUR RATE\*\*

Double: \$2,995  
Single: \$3,895  
—plus \$350/person internal airfare—

-----  
Optional Husky Homestead Dog Sled  
Presentation: \$59/adult  
Optional Denali Glacier Landing Flight:  
\$599/person  
Optional Arctic Circle Flight Tour:  
\$519/person

### Reserve by Credit Card:

Online: [ncsu.orbridge.com](http://ncsu.orbridge.com)  
Phone: (800) 627-2586 or (919) 515-0508  
Email: [hart@ncsu.edu](mailto:hart@ncsu.edu)

### Reserve by Check:

Made payable to **Orbridge, LLC**  
Mail to: NC State Alumni Association  
Box 7503, NC State University  
Raleigh, NC 27695-7503

### GUEST INFORMATION:

Guest #1 Name (Title/Salutation): \_\_\_\_\_

Email: \_\_\_\_\_ Class Year: \_\_\_\_\_

Home Phone: \_\_\_\_\_ Alt. Phone: \_\_\_\_\_

Address: \_\_\_\_\_

City: \_\_\_\_\_ State: \_\_\_\_\_ Zip: \_\_\_\_\_

Guest #2 Name (Title/Salutation): \_\_\_\_\_

Email: \_\_\_\_\_ Class Year: \_\_\_\_\_

Home Phone: \_\_\_\_\_ Alt. Phone: \_\_\_\_\_

### DEPOSIT PAYMENT:

Check    ACH (Automated Clearing House)    MasterCard/Visa    American Express    Discover

Card #: \_\_\_\_\_ Exp. Date: \_\_\_\_\_ CW: \_\_\_\_\_

Name (as printed on card): \_\_\_\_\_

Billing Address (if different from above): \_\_\_\_\_

City: \_\_\_\_\_ State: \_\_\_\_\_ Zip: \_\_\_\_\_

## CATEGORY SELECTION & DEPOSIT:

Category Preference: 1st choice \_\_\_\_\_ 2nd choice \_\_\_\_\_

# \_\_\_\_\_ guests joining pre-tour (\$500/person) +

# \_\_\_\_\_ guests joining program (\$850/person) = **TOTAL DEPOSIT: \$** \_\_\_\_\_

### DENALI PRE-TOUR OPTIONALS (added to your final invoice):

# \_\_\_\_\_ guests joining Husky Homestead Dog Sled Presentation

# \_\_\_\_\_ guests joining Denali Glacier Landing Flight

# \_\_\_\_\_ guests joining Arctic Circle Flight Tour

Participants' dressed weight: Guest #1 \_\_\_\_\_ Guest #2 \_\_\_\_\_ (for flights only; to balance the aircraft)

I/we have read, understand, and agree to the full Terms & Conditions at [terms.orbridge.com](http://terms.orbridge.com) and detailed in program documents; and that Orbridge, LLC is authorized to charge my credit card above and/or take my/our deposit for this program.

Signature: \_\_\_\_\_ Date: \_\_\_\_\_

*\*Special group rates; limited offer. Rates are per person based on double occupancy except where noted as Single, in U.S. dollars. Single availability limited. Airfare not included.*

*\*\*Pre-tour rates are per person based on double occupancy except where noted as Single, in U.S. dollars. Single availability limited. Internal airfare from Anchorage to Main Program is an additional \$350 per person. General airfare not included.*

*†Place your deposit on or before the specified date (see above), and one Expedition Library per room reserved will be sent after receipt of final payment.*

# Terms and Conditions

THE FOLLOWING TERMS AND CONDITIONS ARE EFFECTIVE JULY 1, 2020,  
AND APPLY TO NEW RESERVATIONS RECEIVED BY ORBRIDGE ON OR AFTER JULY 1, 2020.

**Note: Travel credits and transfers are subject to the Terms and Conditions agreed upon at the time of the original reservation.**

## ORBRIDGE® TERMS AND CONDITIONS, RELEASE AND BINDING ARBITRATION AGREEMENT

This Agreement includes contractual terms and conditions and releases Orbridge, LLC from liability. Any payment to Orbridge, including but not limited to deposits or full payments, constitutes your acknowledgement of, and agreement to, this Terms and Conditions, Release and Binding Arbitration Agreement Orbridge set forth below and in subsequent tour documents.

**Limitation of Responsibility.** Orbridge LLC, its shareholders, directors, officers, employees and affiliates (collectively, "Orbridge"), does not own or operate any entity that provides goods or services for your trip including, for example, ownership or control over hotels or other lodging facilities, airline, vessel, bus, van or other transportation companies, local ground operators, providers or organizers of optional excursions or equipment used thereon, food service or entertainment providers, etc., even if they use the "Orbridge LLC" or "Orbridge" name. All such persons and entities are independent contractors. As a result, Orbridge is not liable for any negligent or willful act or failure to act of any such person or entity, or of any other third party. Without limitation, Orbridge is not responsible for any injury, loss, or damage to person or property, death, delay or inconvenience (collectively, "losses") in connection with the provision of any goods or services occasioned by or resulting from, but not limited to, acts of God, acts of government, force majeure, acts of war or civil unrest, insurrection or revolt, strikes or other labor activities, criminal or terrorist activities of any kind, or the threat thereof, overbooking or downgrading of accommodations, structural or other defective conditions in hotels or other lodging or vessel facilities, mechanical or other failure of airplanes or other means of transportation or for any failure of any transportation mechanism to arrive or depart timely or safely, dangers associated with or bites from animals, pests or insects, marine life or vegetation of any sort, dangers incident to recreational activities such as scuba diving, snorkeling, paddle boarding, surfing, swimming, kayaking, sailing, canoeing, rafting, hiking, bicycling, rock climbing, etc., sanitation problems, food poisoning, lack of access to or quality of medical care, difficulty in evacuation in case of a medical or other emergency, illness, epidemics, pandemics or the threat thereof or for any other cause beyond the direct control of Orbridge. In addition, I release Orbridge from its own negligence and assume all risk thereof.

**Rates.** Program rates are based on minimum participation levels, current fares and costs (air, water, land), tariffs and currency values. While Orbridge does everything possible to maintain the listed program rates, they are subject to change effective immediately upon posting unless otherwise specified by Orbridge. In the case of invoicing errors, we reserve the right to re-invoice with the correct pricing.

**Reservations, Deposits and Final Payment.** To secure your reservation, deposits are due upon placing a reservation as follows: (1) \$850 per person per program and \$500 per person per pre-tour and/or post-tour except for programs noted in (2) and (3); (2) \$2,500 per person for Antarctica and Trans-Siberian Railway and \$500 per person per pre-tour and/or post-tour; (3) a non-refundable \$1,500 per person is due for Tanzania Migration Safari's Rwanda pre-tour. Deposits are payable by check, automated clearing house ("ACH"), wire transfer or major credit card.

Final payment, including any pre-tour and/or post-tour, optional excursion(s) fees and optional electives, is payable by check, ACH or wire transfer, and is due for: (1) all programs except Antarctica and Trans-Siberian Railway—no later than 90 days prior to the program's scheduled departure date; (2) Antarctica and Trans-Siberian Railway—no later than 150 days prior to the program's scheduled departure date.

If your reservation is made between the final payment due date and the program's scheduled departure date, the full cost of the program, plus any pre-tour and/or post-tour, optional excursion(s) fees and optional electives, is due at the time of registration, payable by check, ACH or wire transfer.

Final payments made by credit card are subject to a 2% transaction fee.

If final payment is not received by Orbridge by the final payment due date, Orbridge may, at any time and with or without notice, cancel your reservation in its sole discretion with no right of refund.

**Reservation Grace Period.** Reservations made no sooner than 120 calendar days prior to all programs' scheduled departure date, except Antarctica and Trans-Siberian Railway, and no sooner than 180 calendar days prior to Antarctica and Trans-Siberian Railway's departure dates may be cancelled within thirty (30) calendar days following the reservation date ("Grace Period") for a full refund of all payments received by Orbridge to effectively terminate the reservation.

All payments made for Tanzania Wildlife Safari's Rwanda pre-tour are non-transferrable and non-refundable.

Notice of termination must be in writing, must be received by Orbridge during the Grace Period, and is effective only on timely receipt of such written notice by Orbridge.

For all other reservations and cancellations, the terms of the Cancellations, Credits and Refunds section below apply.

**Cancellations, Credits and Refunds.** All cancellations must be submitted to Orbridge in writing and will be processed as follows:

(a) For all programs except those noted in (b) and (c), if the cancellation notice is received by Orbridge 90 or more calendar days prior to the program's scheduled departure date, a \$500 refund and a \$350 future travel credit ("FTC") will be issued for the main tour and a \$300 refund and a \$200 FTC will be issued for the pre-tour and/or post-tour. The FTC may be applied against final payment to a future Orbridge program. The FTC is valid through December 31, two years after the current calendar year and is transferable at no additional fee. If the cancellation notice is received by Orbridge between 89 and 60 days prior to the scheduled departure date, a 25% cancellation fee will be applied to the full cost of the program, including any pre-tours and/or post-tours. If the cancellation notice is received by Orbridge between 59 and 30 days prior to the scheduled departure date, a 50% cancellation fee will be applied to the full cost of the program, including any pre-tours and/or post-tours. If the cancellation notice is received by Orbridge within 29 days prior to the scheduled departure date, a 100% cancellation fee will be applied to the full cost of the program, including any pre-tours and/or post-tours.

(b) For Antarctica and Trans-Siberian Railway, if the cancellation notice is received by Orbridge 180 or more calendar days prior to the scheduled departure date, a \$1,500 refund and a \$1,000 FTC will be issued for the main tour and a \$300 refund and a \$200 FTC will be issued for the pre-tour and/or post-tour. The FTC may be applied against final payment to a future Orbridge program. The FTC is valid through December 31, two years after the current calendar year and is transferable at no additional fee. If the cancellation notice is received by Orbridge between 179 and 150 days prior to the scheduled departure date, a 25% cancellation fee will be applied to the full cost of the program, including any pre-tours and/or post-tours. If the cancellation notice is received by Orbridge between 149 and 120 days prior to the scheduled departure date, a 50% cancellation fee will be applied to the full cost of the program, including any pre-tours and/or post-tours. If the cancellation notice is received by Orbridge within 119 days prior to the scheduled departure date, a 100% cancellation fee will be applied to the full cost of the program, including any pre-tours and/or post-tours.

(c) All payments made for Tanzania Wildlife Safari's Rwanda pre-tour are non-refundable at all times.

In addition to and not in lieu of the foregoing, a Cancellation Fee equal to 100% of the carrier charge applies to all non-refundable airfares due to your cancellation made at any time prior to the scheduled program departure date, as applicable. Refunds, if any, will be processed within 30 calendar days of our receipt of your written notice.

**Travel Insurance.** Orbridge strongly recommends that you purchase travel and cancellation insurance to protect your investment in the event of unexpected or unforeseen circumstances. In addition, we recommend that you consider obtaining a policy(ies) that will cover emergency medical evacuation insurance and cancel for any reason insurance. Travel and cancellation insurance policies and dates by which policies must be purchased varies by provider/insurer, maximum coverage (including cancel for any reason) is generally only available for purchase within 14 days of your reservation being confirmed. It is advised to determine your insurance needs and make necessary arrangements soon after reserving on tour. If you do not have, but are interested in purchasing, travel and cancellation insurance please contact us.

**Cancelled or Postponed Programs.** All programs are subject to cancellation or postponement by Orbridge prior to the scheduled departure date for such reasons as, but not limited to, insufficient participation, or logistical problems that, in Orbridge's sole judgment, may impede program operations or represent conditions or events that may expose program guests and/or Orbridge to undue risk of harm, injury, damage or inconvenience. In the event of program cancellation or postponement by Orbridge, Orbridge may offer you alternative arrangements such as the option to join the same tour on a different date or a different tour. If the price of your alternative booking is lower than your original booking price, Orbridge will refund the difference within 30 days of the alternative program's departure date. If it is higher than your original booking price, Orbridge will invoice you the difference and you will be responsible therefor. Transferred guests are subject to the terms of the original tour. Except for force majeure or other events described in the Limitation of Responsibility and Cancellation, Credits and Refunds clauses, Orbridge will refund all payments made to Orbridge within 30 calendar days of notice of program cancellation or postponement if an alternative arrangement is not offered.

**Itineraries.** Accommodations, the itinerary, travel directors or expedition leaders, lecturers, hosts, faculty or organization representative, and arranged excursions are subject to change or substitution at any time due to unforeseen circumstances or circumstances beyond Orbridge's control. Reasonable efforts will be made to operate programs as planned, however adjustments, substitutions and changes may occur after the final itinerary has been issued. Orbridge may, in its sole discretion, withdraw a program or any part of it, make such alterations or substitutions to the itinerary or program inclusions as it deems necessary or desirable, and pass on to program participants any expenditures or additional costs caused by any such adjustments, or by delays or events beyond its reasonable control.

**Not Included.** Unless otherwise specifically noted in the itinerary, program prices do not include the following expenses, which if applicable are your sole responsibility to pay and satisfy: trip cancellation insurance and passenger travel protection plan; domestic, international, and internal airfares except as indicated in program inclusions; transfers and luggage handling fees except in connection with scheduled group flights; costs associated with obtaining passports or entry visas; airport departure taxes; airline ticketing fees; airport transfers when arriving/departing on other than scheduled group dates; excess baggage charges; any new value added taxes or other taxes added to program costs by applicable governmental authorities; gratuities to drivers, guides, or ship's crew not specified; meals and beverages other than those specified as being included in the itinerary; sightseeing not included in the itinerary; personal expenses such as laundry, communication charges and optional activities (which are subject to availability); ship, air, or transportation fuel surcharges, if applicable; any items not on the "included" list of the tour documents

**Health and Fitness to Travel.** Through your participation in your tour, you assume responsibility for your own health, safety, and welfare and acknowledge that Orbridge cannot absolutely guarantee your safety or health. Your physician can provide guidance on your personal health risk and precautions to take while traveling. Some programs include physically active elements. To enjoy these programs as intended, a minimum level of fitness is required and Orbridge will require all guests to follow local, state, national and/or World Health Organization health and safety mandates. Accordingly, you must be in good physical and mental condition to participate. You represent that you have no physical, mental or other condition, impairment or disability that may or will cause or create a risk of injury or other hazard to yourself or others in respect to any aspect of the program you have selected. Orbridge may, in its sole discretion, limit, restrict or prohibit participation in any aspect of any program any individual that it considers in its sole discretion to be impaired or unsuitable due to fitness level. In addition, Orbridge may, in its sole discretion and at the participant's sole expense, remove the guest from the program, or restrict the program-related activities of any individual whose physical or mental condition may or is likely to cause a hazard to himself/herself or others, or otherwise impair the enjoyment of other program participants. Any physical condition requiring special attention, diet, or treatment must be reported in writing to Orbridge at the time a program reservation is made. Should you have any questions or need any clarification about a specific program, please ask for details at the time of registration. Orbridge will try to accommodate your situation if possible.

**Accessibility.** Orbridge cannot guarantee that the transportation, lodging, and entertainment/sightseeing accommodations will be accessible to all persons regardless of their physical and mental condition. In addition, many of the activities involved in each program include walking or the like for some distance on uneven ground or pavement or moving water as well as the ability to walk up and down stairs without assistance. Should any individuals seeking to participate in a travel opportunity need special accommodations to ensure their enjoyment of the trip, kindly provide notice at the time the reservation is submitted, and we will see if your participation is feasible. Please understand that the Americans with Disabilities Act is inapplicable outside the United States.

At the time of reservation, Orbridge needs to be notified to determine if the special needs of an individual traveler can be met through special arrangements. It is possible that minor modifications to the services can be provided, but only if Orbridge is made specifically aware of anticipated needs. This notification should be made in writing no less than two weeks prior to the planned travel. Neither Orbridge nor any of the providers of transportation, lodging, or other services can provide special accommodations without this advance notice.

Where an individual with certain specific needs will be traveling with a group, it is necessary for other members of that person's group to be available to assist as necessary. Neither employees of Orbridge nor any suppliers of services can allow any of their employees to provide physical assistance to any guests.

**Travel Advisories.** The State Department and the Centers for Disease Control periodically issue statements and advisories about risks to travelers. These statements are country specific and contain important information. The State Department information can be found at [www.travel.state.gov](http://www.travel.state.gov), and the CDC statements can be found at <http://www.cdc.gov>. Orbridge highly recommends everyone to review these sites.

**Children.** Orbridge welcomes the participation of children in most of its programs. However, in the event you do include your children or other minors for whom you serve as legal guardian ("Dependents") in your travel plans, you hereby agree that you are and shall be at all times solely responsible for their care, actions, safety and protection during the program and any pre-tour and/or post-tour. Should you have any questions whether a particular program or inclusion is possible or suitable for your Dependent(s), please contact us.

**Baggage.** Program rates include the price of one piece of policy-compliant baggage per person during the land or cruise portion of the program only unless specified in the itinerary. Air carriers, and motor coaches often impose significant other restrictions or limitations on the number of pieces, size and weight of luggage and may reject or impose additional fees on luggage exceeding such limitations or restrictions. All such fees are your sole cost and responsibility. In addition and regardless of location or transportation method, your baggage and personal effects are and shall at all times be at your sole risk throughout the entire program. Please check with your air carrier for other applicable baggage restrictions and limitations.

**Travel Documents.** All guests are responsible for possessing and maintaining necessary travel documents. These documents shall be valid under state, federal law and as required by foreign countries being visited. Orbridge is not responsible for invalid travel documents and repercussions thereof.

For U.S. citizens, valid passports are required for travel to foreign destinations and some countries require specific visas prior to entry. Please direct any questions in respect to visa requirements to Orbridge, which shall use commercially reasonable efforts to provide answers as a courtesy, provided that it shall remain your sole responsibility and obligation to obtain and verify that you have all required travel documents, including visas, necessary and appropriate for the program location(s) and sufficient blank pages in your passport for visas and immigration stamps. In addition, some countries require your passport have an expiry date of not less than six months after your anticipated return to the United States. Orbridge disclaims all liability for any expenses or costs you may incur due to your prohibition or restriction from entering a country on the program itinerary or reentering the United States at the conclusion of the program. If travel documents fail to meet these requirements, boarding of aircraft or ship to any international destination may be denied and entry into such countries may be denied.

**Photos and Videos.** Orbridge may take photographs and/or video of its trips and participant grants Orbridge permission to do so and for it to use such for promotional or commercial use without payment of any compensation to participant. In addition, Orbridge may use, without compensation, any photographs or video taken by tour participants and submitted to Orbridge or to Smugmug without payment of any compensation. In submitting any such photographs or videos to Orbridge or Smugmug, participant warrants that he or she took the image and that the dissemination of same does not violate the copyright rights of any person.

**Data Rights, Permissions.** Data collected and/or derived by Orbridge resulting from your use of the Website is the sole and exclusive property of Orbridge and may be used in any manner consistent with its Privacy Policy located on Orbridge's website. By submitting to Orbridge a digital or hard copy form that includes your personal contact information, including without limitation, your email address and telephone number(s), you give Orbridge and any other entity identified on the form permission to use that information to contact you and as otherwise may be described on the form and/or in the Privacy Policy.

**Other.** Dates, program details and costs are based on tariffs, exchange rates and other information current at the time of printing, but are subject to change at any time. While we do not anticipate material revisions of the itinerary or its included features, we do reserve the right to substitute accommodations or modes of transportation and to make any changes in the itinerary Orbridge, in its sole discretion, deems necessary and in that case any additional expense or cost will be paid by the individual guest. Your baggage and personal effects are your sole responsibility at all times. It is prohibited by federal law and Orbridge policy to bring illegal drugs, firearms, or other contraband (including marijuana for medical or recreational purposes) on any program.

Orbridge may at any time and without notice modify these terms and conditions, and any modification so made will be effective for all reservations made from and after the posted Effective Date.

In the event any term in these terms and conditions is deemed unenforceable the unenforceable clause shall be interpreted to give effect to the parties' intentions to the greatest enforceable extent, and all other provisions hereof shall remain fully enforceable according to their terms.

**Binding Arbitration.** I agree that any dispute concerning, relating, or referring to this contract, the brochure, or any other literature concerning my trip, or the trip itself shall be resolved exclusively by binding arbitration in Seattle, Washington, either according to the then existing commercial rules of the American Arbitration Association or pursuant to the Comprehensive Arbitration Rules & Procedures of the Judicial Arbitration and Mediation Services, Inc. (JAMS). Such proceedings will be governed by substantive (but not procedural) Washington law. The arbitrator and not any federal, state, or local court or agency shall have exclusive authority to resolve any dispute relating to the interpretation, applicability, enforceability, conscionability, or formation of this contract, including but not limited to any claim that all or any part of this contract is void or voidable. By agreeing to these terms and conditions, both parties are waiving their right to a trial by jury. Any arbitration commenced against Orbridge must be on behalf of only the individual(s) to this Agreement and his or her immediate family members travelling with them, such as a spouse or child. Under no circumstances can participant be part of a class or other joint action.

**Acceptance of Contract.** ANY PAYMENT TO ORBRIDGE, INCLUDING BUT NOT LIMITED TO DEPOSITS OR FULL PAYMENTS, CONSTITUTES YOUR ACKNOWLEDGEMENT OF AND AGREEMENT TO THESE TERMS AND CONDITIONS SET FORTH ABOVE AND IN MORE SPECIFIC TOUR DOCUMENTS.

©2020 ORBRIDGE LLC. All rights reserved.

ORBRIDGE, ORBRIDGE DESTINATION SPECIALISTS, ORBRIDGE GROUP, and OBR are service marks of Orbridge LLC. The service marks and trademarks of any supplier appearing in these materials are owned by each respective company.

WAST# 602828994; CAST# 2098750-40

(v. 070120)

**Please sign, date and print guest name(s).**

\_\_\_\_\_  
Guest #1 Signature

\_\_\_\_\_  
Date

\_\_\_\_\_  
Print Name

\_\_\_\_\_  
Guest #2 Signature

\_\_\_\_\_  
Date

\_\_\_\_\_  
Print Name

For a Minor

I, as an authorized parent or guardian of the below named minor, hereby give my permission for my child or ward to participate in the trip and further agree, individually and on behalf of my child or ward, to the terms of the above. In the event the minor is not accompanied by all legal guardians on this trip, I agree to carry with me a notarized document from each legal guardian, not on the trip, granting his or her approval for the minor to travel on this trip and to present said document(s) to any authority requesting such. In the event I am the sole guardian of the minor, I agree to carry documentation evidencing such and present to any authority when requested.

\_\_\_\_\_  
Name of Minor

\_\_\_\_\_  
Signature of Parent or Guardian

\_\_\_\_\_  
Date

\_\_\_\_\_  
Print Name